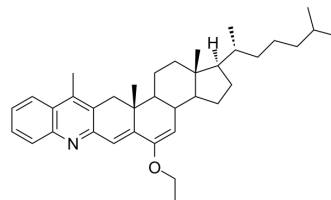


## A $\beta$ -IN-2

Cat. No.:	HY-144327
Molecular Formula:	C <sub>37</sub> H <sub>51</sub> NO
Molecular Weight:	525.81
Target:	Amyloid- $\beta$
Pathway:	Neuronal Signaling
Storage:	Please store the product under the recommended conditions in the Certificate of Analysis.



### BIOLOGICAL ACTIVITY

#### Description

A $\beta$ -IN-2 is a A $\beta$ 1-42 aggregation inhibitor. A $\beta$ -IN-2 inhibits A $\beta$ 1-42 self-aggregation in vitro by delaying the exponential growth phase or reduces the quantity of fibrils in the steady state. A $\beta$ -IN-2 can be used for the research of conformational disorders<sup>[1]</sup>.

### REFERENCES

[1]. Hélio M T Albuquerque, et al. Steroid-Quinoline Hybrids for Disruption and Reversion of Protein Aggregation Processes. *ACS Med Chem Lett.* 2022 Feb 14;13(3):443-448.

**Caution: Product has not been fully validated for medical applications. For research use only.**

Tel: 609-228-6898

Fax: 609-228-5909

E-mail: tech@MedChemExpress.com

Address: 1 Deer Park Dr, Suite Q, Monmouth Junction, NJ 08852, USA