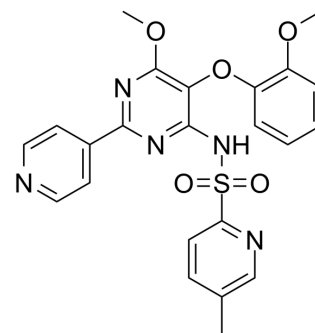


Avosentan

Cat. No.:	HY-15195		
CAS No.:	290815-26-8		
Molecular Formula:	C ₂₃ H ₂₁ N ₅ O ₅ S		
Molecular Weight:	479.51		
Target:	Endothelin Receptor		
Pathway:	GPCR/G Protein		
Storage:	Powder	-20°C	3 years
		4°C	2 years
	In solvent	-80°C	2 years
		-20°C	1 year



SOLVENT & SOLUBILITY

In Vitro

DMSO : 6.67 mg/mL (13.91 mM; Need ultrasonic)

Concentration	Solvent	Mass		
		1 mg	5 mg	10 mg
Preparing Stock Solutions	1 mM	2.0855 mL	10.4273 mL	20.8546 mL
	5 mM	0.4171 mL	2.0855 mL	4.1709 mL
	10 mM	0.2085 mL	1.0427 mL	2.0855 mL

Please refer to the solubility information to select the appropriate solvent.

In Vivo

- Add each solvent one by one: 10% DMSO >> 40% PEG300 >> 5% Tween-80 >> 45% saline
Solubility: ≥ 0.67 mg/mL (1.40 mM); Clear solution
- Add each solvent one by one: 10% DMSO >> 90% corn oil
Solubility: ≥ 0.67 mg/mL (1.40 mM); Clear solution

BIOLOGICAL ACTIVITY

Description

Avosentan(Ro 67-0565; SPP-301) is a potent, selective endothelin receptor(ETA receptor) antagonist. IC50 value: Target: ETA receptor

REFERENCES

- [1]. Baltatu OC, Iliescu R, Zaugg CE, Reckelhoff JF, Louie P, Schumacher C, Campos LA. Antidiuretic effects of the endothelin receptor antagonist avosentan. *Front Physiol.* 2012;3:103.
- [2]. Konieczka K, Meyer P, Schoetzau A, Neutzner A, Mozaffarieh M, Flammer J. Effect of avosentan (SPP-301) in porcine ciliary arteries. *Curr Eye Res.* 2011 Feb;36(2):118-24.

-
- [3]. Mann JF, Green D, Jamerson K, Ruilope LM, Kuranoff SJ, Littke T, Viberti G; ASCEND Study Group. J Am Soc Nephrol. 2010 Mar;21(3):527-35.
- [4]. Dieterle W, Hengelage T. Absolute bioavailability and pharmacokinetics of avosentan in man. Int J Clin Pharmacol Ther. 2009 Sep;47(9):587-94.
- [5]. Effect of SPP 301, an Endothelin Antagonist, on Intraocular Pressure in Glaucomatous Monkey Eyes By Wang, Rong-Fang; Podos, Steven M.; Serle, Janet B.; Baltatu, Ovidiu C. From Current Eye Research (2011), 36(1), 41-46.
-

Caution: Product has not been fully validated for medical applications. For research use only.

Tel: 609-228-6898 Fax: 609-228-5909 E-mail: tech@MedChemExpress.com

Address: 1 Deer Park Dr, Suite Q, Monmouth Junction, NJ 08852, USA