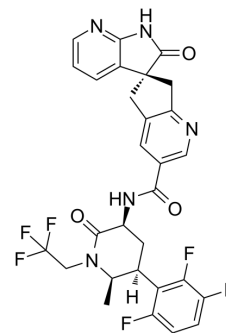


## Atogepant

Cat. No.:	HY-109022		
CAS No.:	1374248-81-3		
Molecular Formula:	C <sub>29</sub> H <sub>23</sub> F <sub>6</sub> N <sub>5</sub> O <sub>3</sub>		
Molecular Weight:	603.52		
Target:	CGRP Receptor		
Pathway:	GPCR/G Protein; Neuronal Signaling		
Storage:	Powder	-20°C	3 years
	In solvent	-80°C	6 months
		-20°C	1 month



### SOLVENT & SOLUBILITY

#### In Vitro

DMSO : 100 mg/mL (165.69 mM; Need ultrasonic)

Concentration	Solvent	Mass		
		1 mg	5 mg	10 mg
Preparing Stock Solutions	1 mM	1.6569 mL	8.2847 mL	16.5695 mL
	5 mM	0.3314 mL	1.6569 mL	3.3139 mL
	10 mM	0.1657 mL	0.8285 mL	1.6569 mL

Please refer to the solubility information to select the appropriate solvent.

### BIOLOGICAL ACTIVITY

#### Description

Atogepant (MK-8031) is an orally active and selective calcitonin gene-related peptide receptor (CGRP) antagonist. Atogepant can be used for researching migraine<sup>[1]</sup>.

#### IC<sub>50</sub> & Target

CGRP<sup>[1]</sup>

### REFERENCES

[1]. Ailani J, et al. Atogepant for the Preventive Treatment of Migraine. N Engl J Med. 2021 Aug 19;385(8):695-706.

---

**Caution: Product has not been fully validated for medical applications. For research use only.**

Tel: 609-228-6898

Fax: 609-228-5909

E-mail: [tech@MedChemExpress.com](mailto:tech@MedChemExpress.com)

Address: 1 Deer Park Dr, Suite Q, Monmouth Junction, NJ 08852, USA