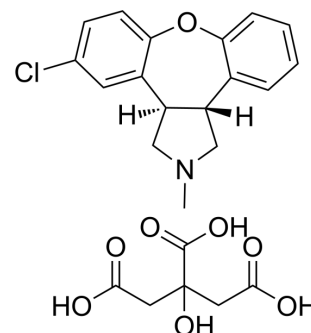


Asenapine citrate

Cat. No.:	HY-10121B
CAS No.:	1411867-74-7
Molecular Formula:	C ₂₃ H ₂₄ ClNO ₈
Molecular Weight:	477.89
Target:	5-HT Receptor; Dopamine Receptor; Adrenergic Receptor; Histamine Receptor
Pathway:	GPCR/G Protein; Neuronal Signaling; Immunology/Inflammation
Storage:	Please store the product under the recommended conditions in the Certificate of Analysis.



BIOLOGICAL ACTIVITY

Description	Asenapine citrate, an atypical antipsychotic, is an antagonist of serotonin receptors (pK _i : 8.4-10.5), adrenoceptors (pK _i : 8.9-9.5), dopamine receptors (pK _i : 8.9-9.4) and histamine receptors (pK _i : 8.2-9.0). Asenapine citrate can be used in the research of schizophrenia and bipolar disorder ^{[1][2]} .			
IC₅₀ & Target	5-HT _{1B} Receptor 8.4 (pKi)	5-HT _{1A} Receptor 8.6 (pKi)	5-HT ₅ Receptor 8.8 (pKi)	5-HT ₆ Receptor 9.6 (pKi)
	5-HT _{2B} Receptor 9.8 (pKi)	5-HT ₇ Receptor 9.9 (pKi)	5-HT _{2A} Receptor 10.2 (pKi)	5-HT _{2C} Receptor 10.5 (pKi)
	α ₁ -adrenergic receptor 8.9 (pKi)	Alpha-2A adrenergic receptor 8.9 (pKi)	Alpha-2C adrenergic receptor 8.9 (pKi)	Alpha-2B adrenergic receptor 9.5 (pKi)
	D ₁ Receptor 8.9 (pKi)	D ₂ Receptor 8.9 (pKi)	D ₄ Receptor 9.0 (pKi)	D ₃ Receptor 9.4 (pKi)
	H ₂ Receptor 8.2 (pKi)	H ₁ Receptor 9.0 (pKi)		
In Vivo	Asenapine (0.05-0.2 mg/kg; s.c.) induces a dose-dependent suppression of conditioned avoidance response (CAR) and does not induce catalepsy ^[2] . MCE has not independently confirmed the accuracy of these methods. They are for reference only.			

REFERENCES

- [1]. M Shahid, et al. Asenapine: a novel psychopharmacologic agent with a unique human receptor signature. *J Psychopharmacol.* 2009 Jan;23(1):65-73.
- [2]. Olivia Frånberg, et al. Asenapine, a novel psychopharmacologic agent: preclinical evidence for clinical effects in schizophrenia. *Psychopharmacology (Berl).* 2008 Feb;196(3):417-29.

Caution: Product has not been fully validated for medical applications. For research use only.

Tel: 609-228-6898

Fax: 609-228-5909

E-mail: tech@MedChemExpress.com

Address: 1 Deer Park Dr, Suite Q, Monmouth Junction, NJ 08852, USA