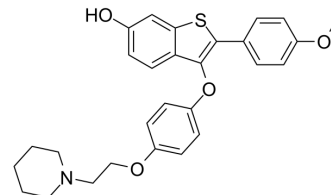


Arzoxifene

Cat. No.:	HY-13556
CAS No.:	182133-25-1
Molecular Formula:	C ₂₈ H ₂₉ NO ₄ S
Molecular Weight:	475.6
Target:	Estrogen Receptor/ERR
Pathway:	Others
Storage:	Please store the product under the recommended conditions in the Certificate of Analysis.



BIOLOGICAL ACTIVITY

Description	Arzoxifene (LY353381) is an orally active selective estrogen receptor modulator with a fixed ring structure similar to raloxifene. Arzoxifene has minimal side effects with powerful antiestrogenic effects on breast cancer and endometrium, with equally strong favorable estrogenic effects on bone and lipid profile ^[1] .
IC₅₀ & Target	estrogen ^[1]
In Vitro	Arzoxifene reduces estrogen receptor expression in endometrial cancer cell lines (ECC-1) ^[1] . MCE has not independently confirmed the accuracy of these methods. They are for reference only.
In Vivo	Arzoxifene inhibits MCF-7 breast cancer xenograft growth in oophorectomized athymic mice. Arzoxifene is reported to prevent body weight increase in oophorectomized rats ^[1] . MCE has not independently confirmed the accuracy of these methods. They are for reference only.

REFERENCES

[1]. Jackson LR, et al. Arzoxifene: the evidence for its development in the management of breast cancer. *Core Evid.* 2008;2(4):251-258.

Caution: Product has not been fully validated for medical applications. For research use only.

Tel: 609-228-6898

Fax: 609-228-5909

E-mail: tech@MedChemExpress.com

Address: 1 Deer Park Dr, Suite Q, Monmouth Junction, NJ 08852, USA