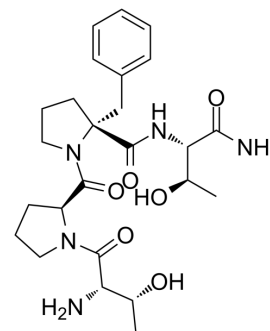


Apimostinel

Cat. No.:	HY-102053
CAS No.:	1421866-48-9
Molecular Formula:	C ₂₅ H ₃₇ N ₅ O ₆
Molecular Weight:	503.59
Target:	iGluR
Pathway:	Membrane Transporter/Ion Channel; Neuronal Signaling
Storage:	4°C, stored under nitrogen * In solvent : -80°C, 6 months; -20°C, 1 month (stored under nitrogen)



SOLVENT & SOLUBILITY

In Vitro

DMSO : 155 mg/mL (307.79 mM; Need ultrasonic)
 H₂O : ≥ 6.67 mg/mL (13.24 mM)
 * "≥" means soluble, but saturation unknown.

Preparing Stock Solutions	Solvent Concentration	Mass		
		1 mg	5 mg	10 mg
	1 mM	1.9857 mL	9.9287 mL	19.8574 mL
	5 mM	0.3971 mL	1.9857 mL	3.9715 mL
	10 mM	0.1986 mL	0.9929 mL	1.9857 mL

Please refer to the solubility information to select the appropriate solvent.

In Vivo

- Add each solvent one by one: 10% DMSO >> 40% PEG300 >> 5% Tween-80 >> 45% saline
Solubility: ≥ 7.75 mg/mL (15.39 mM); Clear solution
- Add each solvent one by one: 10% DMSO >> 90% (20% SBE-β-CD in saline)
Solubility: ≥ 7.75 mg/mL (15.39 mM); Clear solution

BIOLOGICAL ACTIVITY

Description

Apimostinel (NRX-1074; AGN-241660) is an orally active NMDA receptor partial agonist^[1].

In Vitro

Apimostinel (NRX-1074) modulates the NMDA receptor in a similar fashion to GLYX-13, but has a synthetic modification to one of the amino acids, conferring increased potency and oral bioavailability^[1].
 MCE has not independently confirmed the accuracy of these methods. They are for reference only.

In Vivo

In preclinical models the two compounds both appear to be highly efficacious across a number of CNS disorders^[1].
 MCE has not independently confirmed the accuracy of these methods. They are for reference only.

REFERENCES

[1]. Naurex's First Orally Active Molecule, NRX-1074, Demonstrates Statistically Significant Improvement in Depression Scores within 24 Hours in Phase 2 Study for Major Depressive Disorder. January 28, 2015.

Caution: Product has not been fully validated for medical applications. For research use only.

Tel: 609-228-6898

Fax: 609-228-5909

E-mail: tech@MedChemExpress.com

Address: 1 Deer Park Dr, Suite Q, Monmouth Junction, NJ 08852, USA