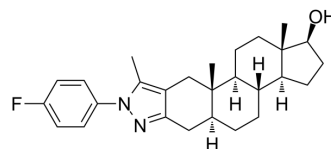


Androgen receptor antagonist 7

Cat. No.:	HY-152524
CAS No.:	2409791-89-3
Molecular Formula:	C ₂₇ H ₃₅ FN ₂ O
Molecular Weight:	422.58
Target:	Androgen Receptor
Pathway:	Vitamin D Related/Nuclear Receptor
Storage:	Please store the product under the recommended conditions in the Certificate of Analysis.



BIOLOGICAL ACTIVITY

Description	Androgen receptor antagonist 7 is an effective androgen receptor (AR) antagonist with an IC ₅₀ value of 1.18 μM. Androgen receptor antagonist 7 has biological activity in vitro and inhibits the expression of AR target in a time and dose dependent manner with an GI ₅₀ value of 7.9 μM ^[1] .																
IC₅₀ & Target	IC ₅₀ : 1.18 μM ^[1]																
In Vitro	<p>Androgen receptor antagonist 7 (compound 3d) (10 μM; 24 h) significantly reduces the expression level of AR protein^[1]. Androgen receptor antagonist 7 (20 μM; 72 h) inhibits the proliferation of LAPC-4 and 22Rv1 cells^[1]. Androgen receptor antagonist 7 (0-20 μM; 24, 48 and 72 h) inhibits the expression of AR in a time and dose dependent manner without inducing apoptosis^[1]. Androgen receptor antagonist 7 (10 μM; 3 d) targets AR in vitro and reduces the expression of AR^[1]. MCE has not independently confirmed the accuracy of these methods. They are for reference only.</p> <p>Western Blot Analysis^[1]</p> <table border="1"> <tr> <td>Cell Line:</td> <td>LAPC-4 cell.</td> </tr> <tr> <td>Concentration:</td> <td>0-20 μM.</td> </tr> <tr> <td>Incubation Time:</td> <td>24, 48 and 72 h.</td> </tr> <tr> <td>Result:</td> <td>Showed inhibitory effect.</td> </tr> </table> <p>Cell Viability Assay^[1]</p> <table border="1"> <tr> <td>Cell Line:</td> <td>LAPC-4 and 22Rv1 cells.</td> </tr> <tr> <td>Concentration:</td> <td>20 μM.</td> </tr> <tr> <td>Incubation Time:</td> <td>72 h.</td> </tr> <tr> <td>Result:</td> <td>Showed antiproliferative effect (cell viability < 40 %).</td> </tr> </table>	Cell Line:	LAPC-4 cell.	Concentration:	0-20 μM.	Incubation Time:	24, 48 and 72 h.	Result:	Showed inhibitory effect.	Cell Line:	LAPC-4 and 22Rv1 cells.	Concentration:	20 μM.	Incubation Time:	72 h.	Result:	Showed antiproliferative effect (cell viability < 40 %).
Cell Line:	LAPC-4 cell.																
Concentration:	0-20 μM.																
Incubation Time:	24, 48 and 72 h.																
Result:	Showed inhibitory effect.																
Cell Line:	LAPC-4 and 22Rv1 cells.																
Concentration:	20 μM.																
Incubation Time:	72 h.																
Result:	Showed antiproliferative effect (cell viability < 40 %).																

REFERENCES

Caution: Product has not been fully validated for medical applications. For research use only.

Tel: 609-228-6898

Fax: 609-228-5909

E-mail: tech@MedChemExpress.com

Address: 1 Deer Park Dr, Suite Q, Monmouth Junction, NJ 08852, USA