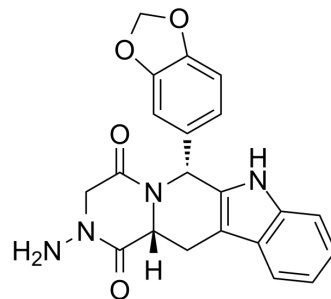


Amino Tadalafil

Cat. No.:	HY-117109
CAS No.:	385769-84-6
Molecular Formula:	C ₂₁ H ₁₈ N ₄ O ₄
Molecular Weight:	390.39
Target:	Phosphodiesterase (PDE)
Pathway:	Metabolic Enzyme/Protease
Storage:	-20°C, protect from light * In solvent : -80°C, 6 months; -20°C, 1 month (protect from light)



SOLVENT & SOLUBILITY

In Vitro

DMSO : 125 mg/mL (320.19 mM; Need ultrasonic)

Concentration	Solvent	Mass		
		1 mg	5 mg	10 mg
Preparing Stock Solutions	1 mM	2.5615 mL	12.8077 mL	25.6154 mL
	5 mM	0.5123 mL	2.5615 mL	5.1231 mL
	10 mM	0.2562 mL	1.2808 mL	2.5615 mL

Please refer to the solubility information to select the appropriate solvent.

BIOLOGICAL ACTIVITY

Description

Amino Tadalafil is an analog of Tadalafil. Tadalafil is a potent inhibitor of phosphodiesterase 5 (PDE5) with applications in several conditions, including erectile dysfunction, pulmonary arterial hypertension, and lower urinary tract dysfunction.

REFERENCES

[1]. D K Kim, et al. Synthesis and phosphodiesterase 5 inhibitory activity of new 5-phenyl-1,6-dihydro-7H-pyrazolo[4,3-d]pyrimidin-7-one derivatives containing an N-acylamido group phenyl ring. Bioorg Med Chem. 2001 Jul;9(7):1895-9.

Caution: Product has not been fully validated for medical applications. For research use only.

Tel: 609-228-6898

Fax: 609-228-5909

E-mail: tech@MedChemExpress.com

Address: 1 Deer Park Dr, Suite Q, Monmouth Junction, NJ 08852, USA