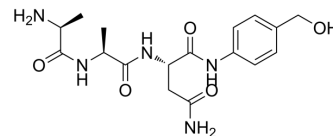


## Ala-Ala-Asn-PAB

Cat. No.:	HY-129360
CAS No.:	2149584-00-7
Molecular Formula:	C <sub>17</sub> H <sub>25</sub> N <sub>5</sub> O <sub>5</sub>
Molecular Weight:	379.41
Target:	ADC Linker
Pathway:	Antibody-drug Conjugate/ADC Related
Storage:	Please store the product under the recommended conditions in the Certificate of Analysis.



### BIOLOGICAL ACTIVITY

Description	Ala-Ala-Asn-PAB is a peptide cleavable ADC linker for antibody-drug conjugates (ADCs) <sup>[1]</sup> .
IC <sub>50</sub> & Target	Cleavable

### REFERENCES

[1]. Cheng X, et al. MORAb-202, an Antibody-Drug Conjugate Utilizing Humanized Anti-human FR $\alpha$  Farletuzumab and the Microtubule-targeting Agent Eribulin, has Potent Antitumor Activity. *Mol Cancer Ther.* 2018 Dec;17(12):2665-2675.

**Caution: Product has not been fully validated for medical applications. For research use only.**

Tel: 609-228-6898

Fax: 609-228-5909

E-mail: tech@MedChemExpress.com

Address: 1 Deer Park Dr, Suite Q, Monmouth Junction, NJ 08852, USA