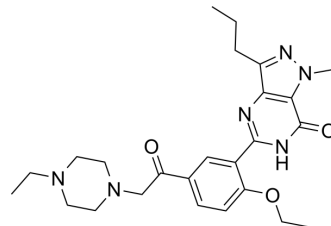


Acetildenafil

| | |
|--------------------|---|
| Cat. No.: | HY-13927 |
| CAS No.: | 831217-01-7 |
| Molecular Formula: | C ₂₅ H ₃₄ N ₆ O ₃ |
| Molecular Weight: | 466.58 |
| Target: | Phosphodiesterase (PDE) |
| Pathway: | Metabolic Enzyme/Protease |
| Storage: | Please store the product under the recommended conditions in the Certificate of Analysis. |



BIOLOGICAL ACTIVITY

| | |
|---------------------------|--|
| Description | Acetildenafil is a Sildenafil (HY-15025) analogue, a phosphodiesterase 5 (PDE5) inhibitor. Acetildenafil can be isolated from herbal products ^[1] . |
| IC ₅₀ & Target | PDE5 |

REFERENCES

[1]. Blok-Tip L, et al. Structure elucidation of sildenafil analogues in herbal products. Food Addit Contam. 2004 Aug;21(8):737-48.

Caution: Product has not been fully validated for medical applications. For research use only.

Tel: 609-228-6898

Fax: 609-228-5909

E-mail: tech@MedChemExpress.com

Address: 1 Deer Park Dr, Suite Q, Monmouth Junction, NJ 08852, USA