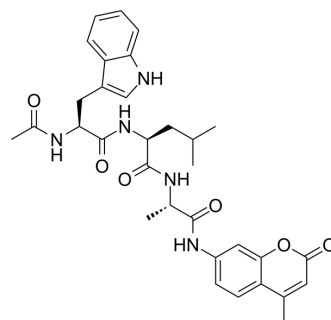


Ac-WLA-AMC

Cat. No.:	HY-123051
CAS No.:	1104011-59-7
Molecular Formula:	C ₃₂ H ₃₇ N ₅ O ₆
Molecular Weight:	587.67
Target:	Proteasome
Pathway:	Metabolic Enzyme/Protease
Storage:	Sealed storage, away from moisture and light
	Powder -80°C 2 years
	-20°C 1 year
	* In solvent : -80°C, 6 months; -20°C, 1 month (sealed storage, away from moisture and light)



SOLVENT & SOLUBILITY

In Vitro

DMSO : 250 mg/mL (425.41 mM; Need ultrasonic)

Concentration	Mass		
	1 mg	5 mg	10 mg
1 mM	1.7016 mL	8.5082 mL	17.0164 mL
5 mM	0.3403 mL	1.7016 mL	3.4033 mL
10 mM	0.1702 mL	0.8508 mL	1.7016 mL

Please refer to the solubility information to select the appropriate solvent.

BIOLOGICAL ACTIVITY

Description

Ac-WLA-AMC is a specific 20S constitutive proteasome β 5 fluorogenic substrate^[1].

IC₅₀ & Target

20S constitutive proteasome β 5^[1]

REFERENCES

[1]. Kim S, et al. Evaluation of Immunoproteasome-Specific Proteolytic Activity Using Fluorogenic Peptide Substrates. Immune Netw. 2022 Apr 15;22(3):e28.

Caution: Product has not been fully validated for medical applications. For research use only.

Tel: 609-228-6898

Fax: 609-228-5909

E-mail: tech@MedChemExpress.com

Address: 1 Deer Park Dr, Suite Q, Monmouth Junction, NJ 08852, USA