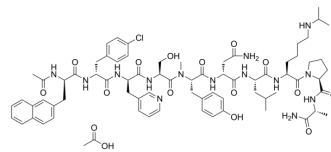


## Abarelix Acetate

<b>Cat. No.:</b>	HY-13534A
<b>CAS No.:</b>	547741-72-0
<b>Molecular Formula:</b>	C <sub>74</sub> H <sub>99</sub> ClN <sub>14</sub> O <sub>16</sub>
<b>Molecular Weight:</b>	1476.12
<b>Target:</b>	GnRH Receptor
<b>Pathway:</b>	GPCR/G Protein
<b>Storage:</b>	Sealed storage, away from moisture
	Powder    -80°C    2 years
	-20°C    1 year



\* In solvent : -80°C, 6 months; -20°C, 1 month (sealed storage, away from moisture)

### SOLVENT & SOLUBILITY

#### In Vitro

DMSO : ≥ 100 mg/mL (67.75 mM)  
H<sub>2</sub>O : 25 mg/mL (16.94 mM; Need ultrasonic)  
\* "≥" means soluble, but saturation unknown.

Preparing Stock Solutions	Solvent		Mass		
	Concentration		1 mg	5 mg	10 mg
	1 mM		0.6775 mL	3.3873 mL	6.7745 mL
	5 mM		0.1355 mL	0.6775 mL	1.3549 mL
	10 mM		0.0677 mL	0.3387 mL	0.6775 mL

Please refer to the solubility information to select the appropriate solvent.

#### In Vivo

- Add each solvent one by one: 10% DMSO >> 40% PEG300 >> 5% Tween-80 >> 45% saline  
Solubility: ≥ 2.5 mg/mL (1.69 mM); Clear solution
- Add each solvent one by one: 10% DMSO >> 90% (20% SBE-β-CD in saline)  
Solubility: ≥ 2.5 mg/mL (1.69 mM); Clear solution
- Add each solvent one by one: 10% DMSO >> 90% corn oil  
Solubility: ≥ 2.5 mg/mL (1.69 mM); Clear solution

### BIOLOGICAL ACTIVITY

#### Description

Abarelix Acetate (PPI 149 Acetate; R 3827 Acetate) is a potent gonadotrophin-releasing hormone (GnRH) antagonist, used for prostate cancer research<sup>[1]</sup>.

#### IC<sub>50</sub> & Target

GnRH<sup>[1]</sup>

---

## CUSTOMER VALIDATION

- Am J Physiol Endocrinol Metab. 2020 Jul 1;319(1):E81-E90.

See more customer validations on [www.MedChemExpress.com](http://www.MedChemExpress.com)

---

## REFERENCES

[1]. Koechling W, et al. A novel GnRH antagonist, causes minimal histamine release compared with abarelix in an ex vivo model of human skin samples. Br J Clin Pharmacol. 2010 Oct;70(4):580-7.

---

**Caution: Product has not been fully validated for medical applications. For research use only.**

Tel: 609-228-6898

Fax: 609-228-5909

E-mail: [tech@MedChemExpress.com](mailto:tech@MedChemExpress.com)

Address: 1 Deer Park Dr, Suite Q, Monmouth Junction, NJ 08852, USA