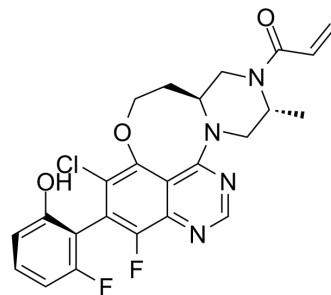


## AZD4625

Cat. No.:	HY-146223		
Molecular Formula:	C <sub>24</sub> H <sub>21</sub> ClF <sub>2</sub> N <sub>4</sub> O <sub>3</sub>		
Molecular Weight:	486.9		
Target:	Ras		
Pathway:	GPCR/G Protein		
Storage:	Powder	-20°C	3 years
	In solvent	-80°C	6 months
		-20°C	1 month



### SOLVENT & SOLUBILITY

In Vitro	DMSO : 100 mg/mL (205.38 mM; Need ultrasonic)						
	Preparing Stock Solutions	Solvent Concentration	Mass	1 mg	5 mg		
				10 mg			
				1 mM	2.0538 mL	10.2690 mL	20.5381 mL
				5 mM	0.4108 mL	2.0538 mL	4.1076 mL
10 mM	0.2054 mL	1.0269 mL	2.0538 mL				
Please refer to the solubility information to select the appropriate solvent.							
In Vivo	1. Add each solvent one by one: 10% DMSO >> 40% PEG300 >> 5% Tween-80 >> 45% saline Solubility: ≥ 2.08 mg/mL (4.27 mM); Clear solution						
	2. Add each solvent one by one: 10% DMSO >> 90% (20% SBE-β-CD in saline) Solubility: ≥ 2.08 mg/mL (4.27 mM); Clear solution						
	3. Add each solvent one by one: 10% DMSO >> 90% corn oil Solubility: ≥ 2.08 mg/mL (4.27 mM); Clear solution						

### BIOLOGICAL ACTIVITY

Description	AZD4625 (Compound 21) is a highly potent, selective, covalent and allosteric inhibitor of the mutant GTPase KRAS <sup>G12C</sup> . AZD4625 has high oral bioavailability <sup>[1]</sup> .
IC <sub>50</sub> & Target	KRAS(G12C)

### REFERENCES

**Caution: Product has not been fully validated for medical applications. For research use only.**

Tel: 609-228-6898

Fax: 609-228-5909

E-mail: [tech@MedChemExpress.com](mailto:tech@MedChemExpress.com)

Address: 1 Deer Park Dr, Suite Q, Monmouth Junction, NJ 08852, USA