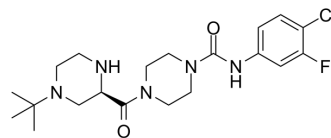


AZD2423

Cat. No.:	HY-135891	
CAS No.:	1229603-37-5	
Molecular Formula:	C ₂₀ H ₂₉ ClFN ₅ O ₂	
Molecular Weight:	425.93	
Target:	CCR	
Pathway:	GPCR/G Protein; Immunology/Inflammation	
Storage:	Powder	-20°C 3 years 4°C 2 years
	In solvent	-80°C 6 months -20°C 1 month



SOLVENT & SOLUBILITY

In Vitro	DMSO : 100 mg/mL (234.78 mM; Need ultrasonic)				
		Solvent Concentration	Mass 1 mg	5 mg	10 mg
	Preparing Stock Solutions	1 mM	2.3478 mL	11.7390 mL	23.4780 mL
		5 mM	0.4696 mL	2.3478 mL	4.6956 mL
10 mM		0.2348 mL	1.1739 mL	2.3478 mL	
Please refer to the solubility information to select the appropriate solvent.					
In Vivo	<ol style="list-style-type: none"> Add each solvent one by one: 10% DMSO >> 40% PEG300 >> 5% Tween-80 >> 45% saline Solubility: ≥ 2.5 mg/mL (5.87 mM); Clear solution Add each solvent one by one: 10% DMSO >> 90% (20% SBE-β-CD in saline) Solubility: ≥ 2.5 mg/mL (5.87 mM); Clear solution Add each solvent one by one: 10% DMSO >> 90% corn oil Solubility: ≥ 2.5 mg/mL (5.87 mM); Clear solution 				

BIOLOGICAL ACTIVITY

Description	AZD2423 is a potent, selective, orally bioavailable, and non-competitive CCR2 chemokine receptor negative allosteric modulator. AZD2423 has an IC ₅₀ of 1.2 nM for CCR2 Ca ²⁺ flux ^{[1][2][3]} .
IC₅₀ & Target	CCR2
In Vitro	AZD2423 inhibits MCP-1 induced calcium mobilization and chemotaxis of THP-1 cell line with an IC ₅₀ of 4 nM ^[1] . MCE has not independently confirmed the accuracy of these methods. They are for reference only.

REFERENCES

[1]. AZD2423.

[2]. John G. Cumming. CCR2 antagonists for the treatment of neuropathic pain: The discovery and development of AZD2423.

[3]. Kalliomäki J, et al. A randomized, double-blind, placebo-controlled trial of a chemokine receptor 2 (CCR2) antagonist in posttraumatic neuralgia. *Pain*. 2013 May;154(5):761-7.

Caution: Product has not been fully validated for medical applications. For research use only.

Tel: 609-228-6898

Fax: 609-228-5909

E-mail: tech@MedChemExpress.com

Address: 1 Deer Park Dr, Suite Q, Monmouth Junction, NJ 08852, USA