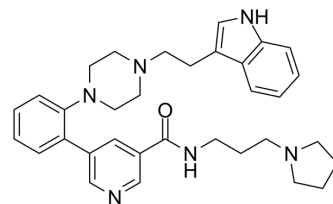


AZ506

Cat. No.:	HY-134828		
CAS No.:	2043321-54-4		
Molecular Formula:	C ₃₃ H ₄₀ N ₆ O		
Molecular Weight:	536.71		
Target:	Histone Methyltransferase		
Pathway:	Epigenetics		
Storage:	Powder	-20°C	3 years
		4°C	2 years
	In solvent	-80°C	6 months
		-20°C	1 month



SOLVENT & SOLUBILITY

In Vitro	DMSO : 50 mg/mL (93.16 mM; Need ultrasonic)					
		Solvent Concentration	Mass	1 mg	5 mg	10 mg
	Preparing Stock Solutions	1 mM		1.8632 mL	9.3160 mL	18.6320 mL
		5 mM		0.3726 mL	1.8632 mL	3.7264 mL
10 mM			0.1863 mL	0.9316 mL	1.8632 mL	
Please refer to the solubility information to select the appropriate solvent.						
In Vivo	<ol style="list-style-type: none"> Add each solvent one by one: 10% DMSO >> 40% PEG300 >> 5% Tween-80 >> 45% saline Solubility: ≥ 2.5 mg/mL (4.66 mM); Clear solution Add each solvent one by one: 10% DMSO >> 90% (20% SBE-β-CD in saline) Solubility: 2.5 mg/mL (4.66 mM); Suspended solution; Need ultrasonic Add each solvent one by one: 10% DMSO >> 90% corn oil Solubility: ≥ 2.5 mg/mL (4.66 mM); Clear solution 					

BIOLOGICAL ACTIVITY

Description	AZ506 is a potent SMYD2 inhibitor with an IC ₅₀ of 17 nM. AZ506 inhibits SMYD2 methyltransferase activity in cells, leading to a decrease in the SMYD2-mediated methylation signal ^[1] .
IC₅₀ & Target	SMYD2 17 nM (IC ₅₀)
In Vitro	AZ506 inhibits SMYD2 mediated methylation of monomethyl p53 peptide in U2OS cells with an EC ₅₀ of 1.2 μM. AZ506 inhibits

SMYD2-mediated methylation (p53-me in U2OS cells) with an IC₅₀ of 2.43 μM^[1].
MCE has not independently confirmed the accuracy of these methods. They are for reference only.

CUSTOMER VALIDATION

- Cells. 2022 Apr 8;11(8):1262.

See more customer validations on www.MedChemExpress.com

REFERENCES

[1]. Cowen SD, et al. Design, Synthesis, and Biological Activity of Substrate Competitive SMYD2 Inhibitors. J Med Chem. 2016;59(24):11079-11097.

Caution: Product has not been fully validated for medical applications. For research use only.

Tel: 609-228-6898

Fax: 609-228-5909

E-mail: tech@MedChemExpress.com

Address: 1 Deer Park Dr, Suite Q, Monmouth Junction, NJ 08852, USA