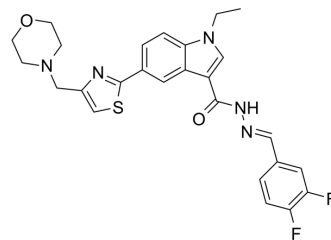


## ATX inhibitor 21

|                    |   |
|--------------------|---|
| Cat. No.:          | HY-146124   |
| CAS No.:           | 2691936-89-5  |
| Molecular Formula: | C <sub>26</sub> H <sub>25</sub> F <sub>2</sub> N <sub>5</sub> O <sub>2</sub> S            |
| Molecular Weight:  | 509.57  |
| Target:            | Phosphodiesterase (PDE)   |
| Pathway:           | Metabolic Enzyme/Protease   |
| Storage:           | Please store the product under the recommended conditions in the Certificate of Analysis. |



### BIOLOGICAL ACTIVITY

|                           |   |
|---------------------------|---|
| Description               | ATX inhibitor 21 (compound 8) is a potent ATX (autotaxin) inhibitor, with an IC <sub>50</sub> of 3490 nM <sup>[1]</sup> . |
| IC <sub>50</sub> & Target | Autotaxin<br>3490 ± 170 nM (IC <sub>50</sub> )  |

### REFERENCES

[1]. Jia F, et al. Structure-based linker exploration: Discovery of 1-ethyl-1H-indole analogs as novel ATX inhibitors. *Bioorg Med Chem*. 2020 Nov 15;28(22):115795.

**Caution: Product has not been fully validated for medical applications. For research use only.**

Tel: 609-228-6898

Fax: 609-228-5909

E-mail: tech@MedChemExpress.com

Address: 1 Deer Park Dr, Suite Q, Monmouth Junction, NJ 08852, USA