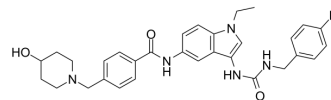


ATX inhibitor 20

Cat. No.:	HY-146123
CAS No.:	2691937-03-6
Molecular Formula:	C ₃₁ H ₃₄ FN ₅ O ₃
Molecular Weight:	543.63
Target:	Phosphodiesterase (PDE)
Pathway:	Metabolic Enzyme/Protease
Storage:	Please store the product under the recommended conditions in the Certificate of Analysis.



BIOLOGICAL ACTIVITY

Description	ATX inhibitor 20 (compound 24) is a potent ATX (autotaxin) inhibitor, with an IC ₅₀ of 2.3 nM ^[1] .
IC ₅₀ & Target	Autotaxin 2.3 ± 0.31 nM (IC ₅₀)

REFERENCES

[1]. Jia F, et al. Structure-based linker exploration: Discovery of 1-ethyl-1H-indole analogs as novel ATX inhibitors. *Bioorg Med Chem.* 2020 Nov 15;28(22):115795.

Caution: Product has not been fully validated for medical applications. For research use only.

Tel: 609-228-6898

Fax: 609-228-5909

E-mail: tech@MedChemExpress.com

Address: 1 Deer Park Dr, Suite Q, Monmouth Junction, NJ 08852, USA