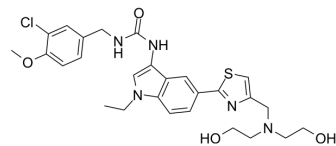


ATX inhibitor 15

Cat. No.:	HY-143420
CAS No.:	2484811-52-9
Molecular Formula:	C ₂₇ H ₃₂ ClN ₅ O ₄ S
Molecular Weight:	558.09
Target:	Phosphodiesterase (PDE)
Pathway:	Metabolic Enzyme/Protease
Storage:	Please store the product under the recommended conditions in the Certificate of Analysis.



BIOLOGICAL ACTIVITY

Description	ATX inhibitor 15 (compound 30), a indole-based carbamate derivative, is a potent autotaxin (ATX) inhibitor with an IC ₅₀ of 2.17 nM. ATX inhibitor 15 inhibits in vivo ATX and the gene expression of pro-fibrotic factors. ATX inhibitor 15 has lung protection effects in Bleomycin challenged mice lung fibrosis model ^[1] .
IC ₅₀ & Target	Autotaxin 2.17 nM (IC ₅₀)

REFERENCES

[1]. Hongrui Lei, et al. Structural and PK-guided identification of indole-based non-acidic autotaxin (ATX) inhibitors exhibiting high in vivo anti-fibrosis efficacy in rodent model. *Eur J Med Chem.* 2022 Jan 5;227:113951.

Caution: Product has not been fully validated for medical applications. For research use only.

Tel: 609-228-6898

Fax: 609-228-5909

E-mail: tech@MedChemExpress.com

Address: 1 Deer Park Dr, Suite Q, Monmouth Junction, NJ 08852, USA