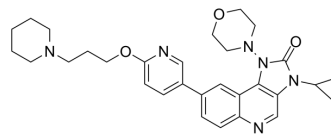


ATM-IN-1

Cat. No.:	HY-142931
CAS No.:	2662761-76-2
Molecular Formula:	C ₃₀ H ₃₆ N ₆ O ₃
Molecular Weight:	528.65
Target:	ATM/ATR
Pathway:	Cell Cycle/DNA Damage; PI3K/Akt/mTOR
Storage:	Please store the product under the recommended conditions in the Certificate of Analysis.



BIOLOGICAL ACTIVITY

Description

ATM-IN-1 is a potent inhibitor of ATM. ATM is located mainly in the nucleus and microsomes and is involved in cell cycle progression and in the cell cycle checkpoint response to DNA damage. ATM-IN-1 has the potential for the research of cancer and neurology diseases (extracted from patent WO2021139814A1, compound 3)^[1].

REFERENCES

[1]. Wenyuan Qian, et al. Quinoline and imidazole compounds and their applications. Patent WO2021139814A1.

Caution: Product has not been fully validated for medical applications. For research use only.

Tel: 609-228-6898

Fax: 609-228-5909

E-mail: tech@MedChemExpress.com

Address: 1 Deer Park Dr, Suite Q, Monmouth Junction, NJ 08852, USA