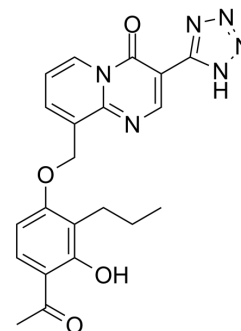


AS-35

Cat. No.:	HY-101946
CAS No.:	108427-72-1
Molecular Formula:	C ₂₁ H ₂₀ N ₆ O ₄
Molecular Weight:	420.42
Target:	Leukotriene Receptor
Pathway:	GPCR/G Protein
Storage:	Please store the product under the recommended conditions in the Certificate of Analysis.



BIOLOGICAL ACTIVITY

Description	AS-35 is an orally effective, potent and selective antagonist of leukotrienes, antagonizes LTC ₄ -, LTD ₄ and LTE ₄ -induced contractions of the ileum with IC ₅₀ values of 8 nM, 4 nM and 3 nM, respectively, and has antiallergic activities.		
IC₅₀ & Target	LTE ₄ 3 nM (IC ₅₀ , In isolated guinea pig ileum)	LTD ₄ 4 nM (IC ₅₀ , In isolated guinea pig ileum)	LTC ₄ 8 nM (IC ₅₀ , In isolated guinea pig ileum)
In Vitro	In isolated guinea pig preparations, AS-35 antagonizes LTC ₄ -, LTD ₄ and LTE ₄ -induced contractions of the ileum with IC ₅₀ values of 8 nM, 4 nM and 3 nM, respectively. In the trachea, the agent also antagonizes LTD ₄ and LTE ₄ -induced contractions with IC ₅₀ values of 10 nM and 20 nM, respectively. However, AS-35 does not antagonize LTC ₄ -induced tracheal contraction in the presence of L-serine borate ^[1] . MCE has not independently confirmed the accuracy of these methods. They are for reference only.		
In Vivo	AS-35 (0.0375 to 0.3 mg/kg, i.v.) dose-dependently antagonizes bronchoconstriction induced by i.v.-injection of LTC ₄ and LTD ₄ in anesthetized guinea pigs, but does not inhibit histamine-induced bronchoconstriction. Oral administration of AS-35 also antagonizes LTD ₄ as well as antigen-induced LT-mediated bronchoconstriction. AS-35 (p.o.) inhibits LTD ₄ -induced increase in the cutaneous vascular permeability of guinea pig ^[1] . MCE has not independently confirmed the accuracy of these methods. They are for reference only.		

REFERENCES

[1]. Kasai H, et al. Peptide leukotriene antagonistic activity of AS-35, a new antiallergic drug. Jpn J Pharmacol. 1992 Apr;58(4):347-55.

Caution: Product has not been fully validated for medical applications. For research use only.

Tel: 609-228-6898

Fax: 609-228-5909

E-mail: tech@MedChemExpress.com

Address: 1 Deer Park Dr, Suite Q, Monmouth Junction, NJ 08852, USA