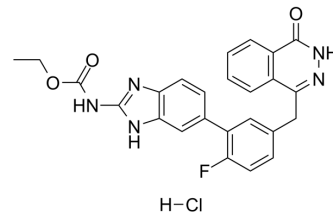


## AMXI-5001 hydrochloride

|                           |  |
|---------------------------|--|
| <b>Cat. No.:</b>          | HY-145734A   |
| <b>Molecular Formula:</b> | C <sub>25</sub> H <sub>21</sub> ClFN <sub>5</sub> O <sub>3</sub>   |
| <b>Molecular Weight:</b>  | 493.92   |
| <b>Target:</b>            | Microtubule/Tubulin  |
| <b>Pathway:</b>           | Cell Cycle/DNA Damage; Cytoskeleton  |
| <b>Storage:</b>           | 4°C, sealed storage, away from moisture<br>* In solvent : -80°C, 6 months; -20°C, 1 month (sealed storage, away from moisture) |



### SOLVENT & SOLUBILITY

#### In Vitro

DMSO : 100 mg/mL (202.46 mM; Need ultrasonic)

| Concentration             | Solvent | Mass      |            |            |
|---------------------------|---------|-----------|------------|------------|
|                           |         | 1 mg      | 5 mg       | 10 mg      |
| Preparing Stock Solutions | 1 mM    | 2.0246 mL | 10.1231 mL | 20.2462 mL |
|                           | 5 mM    | 0.4049 mL | 2.0246 mL  | 4.0492 mL  |
|                           | 10 mM   | 0.2025 mL | 1.0123 mL  | 2.0246 mL  |

Please refer to the solubility information to select the appropriate solvent.

### BIOLOGICAL ACTIVITY

#### Description

AMXI-5001 hydrochloride is a potent, orally active, and dual parp1/2 and microtubule polymerization inhibitor. MXI-5001 hydrochloride exhibits selective antitumor cytotoxicity across a wide variety of human cancer cells with much lower IC<sub>50</sub>s than existing clinical PARP1/2 inhibitors. AMXI-5001 hydrochloride induces complete regression of established tumors, including exceedingly large tumors<sup>[1]</sup>.

### REFERENCES

[1]. Lemjabbar-Alaoui H, et al. AMXI-5001, a novel dual parp1/2 and microtubule polymerization inhibitor for the treatment of human cancers. *Am J Cancer Res.* 2020;10(8):2649-2676.

---

**Caution: Product has not been fully validated for medical applications. For research use only.**

Tel: 609-228-6898

Fax: 609-228-5909

E-mail: [tech@MedChemExpress.com](mailto:tech@MedChemExpress.com)

Address: 1 Deer Park Dr, Suite Q, Monmouth Junction, NJ 08852, USA