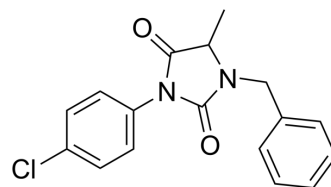


ALLO-1

Cat. No.:	HY-121546
CAS No.:	37468-32-9
Molecular Formula:	C ₁₇ H ₁₅ ClN ₂ O ₂
Molecular Weight:	314.77
Target:	Autophagy; Atg8/LC3
Pathway:	Autophagy
Storage:	Please store the product under the recommended conditions in the Certificate of Analysis.



BIOLOGICAL ACTIVITY

Description	ALLO-1, an autophagy receptor, is essential for autophagosome formation around paternal organelles and directly binds to the worm LC3 homologue LGG-1 through its LC3-interacting region (LIR) motif ^[1] .
IC ₅₀ & Target	Autophagy ^[1]

REFERENCES

[1]. Sato M, et al. The autophagy receptor ALLO-1 and the IKKE-1 kinase control clearance of paternal mitochondria in *Caenorhabditis elegans*. *Nat Cell Biol.* 2018 Jan;20(1):81-91.

Caution: Product has not been fully validated for medical applications. For research use only.

Tel: 609-228-6898

Fax: 609-228-5909

E-mail: tech@MedChemExpress.com

Address: 1 Deer Park Dr, Suite Q, Monmouth Junction, NJ 08852, USA