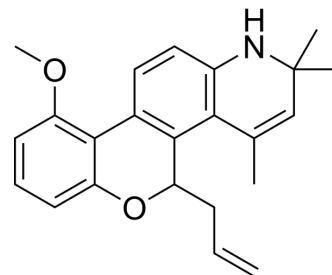


## AL-438

<b>Cat. No.:</b>	HY-114154
<b>CAS No.:</b>	239066-73-0
<b>Molecular Formula:</b>	C <sub>23</sub> H <sub>25</sub> NO <sub>2</sub>
<b>Molecular Weight:</b>	347.45
<b>Target:</b>	Glucocorticoid Receptor
<b>Pathway:</b>	Immunology/Inflammation
<b>Storage:</b>	Please store the product under the recommended conditions in the Certificate of Analysis.



### BIOLOGICAL ACTIVITY

<b>Description</b>	AL-438 is a potent, selective and orally active glucocorticoid receptor modulator with K <sub>i</sub> s of 2.5, 1786, 53, 1440, >1000 nM for glucocorticoid receptor, progesterone receptor, mineralocorticoid receptor, androgen receptor, estrogen receptor, respectively. AL-438 shows antiinflammatory activity <sup>[1][2]</sup> .								
<b>IC<sub>50</sub> &amp; Target</b>	K <sub>i</sub> : 2.5 nM (glucocorticoid receptor) <sup>[1]</sup>								
<b>In Vitro</b>	AL-438 (1 μM) decreases the LPS-induced IL-6 production in ATDC5 cells <sup>[1]</sup> . AL-438 (0-1 μM; 1 h+24 h) inhibits IL-1β (2 ng/ml) induced IL-6 expression in HSKF1501 cells <sup>[2]</sup> . MCE has not independently confirmed the accuracy of these methods. They are for reference only.								
<b>In Vivo</b>	AL-438 (1, 10, 100 mg/kg; p.o.) shows anti-inflammatory activity in rats <sup>[2]</sup> . MCE has not independently confirmed the accuracy of these methods. They are for reference only.								
	<table border="1"> <tr> <td>Animal Model:</td> <td>Male Sprague Dawley rats (carrageenan paw edema model)<sup>[2]</sup></td> </tr> <tr> <td>Dosage:</td> <td>1, 10, 100 mg/kg</td> </tr> <tr> <td>Administration:</td> <td>P.o.</td> </tr> <tr> <td>Result:</td> <td>Showed antiinflammatory activity with ED<sub>50</sub> value of 11 mg/kg in acute inflammation assay.</td> </tr> </table>	Animal Model:	Male Sprague Dawley rats (carrageenan paw edema model) <sup>[2]</sup>	Dosage:	1, 10, 100 mg/kg	Administration:	P.o.	Result:	Showed antiinflammatory activity with ED <sub>50</sub> value of 11 mg/kg in acute inflammation assay.
Animal Model:	Male Sprague Dawley rats (carrageenan paw edema model) <sup>[2]</sup>								
Dosage:	1, 10, 100 mg/kg								
Administration:	P.o.								
Result:	Showed antiinflammatory activity with ED <sub>50</sub> value of 11 mg/kg in acute inflammation assay.								

### REFERENCES

- [1]. Owen HC, et al. The growth plate sparing effects of the selective glucocorticoid receptor modulator, AL-438. *Mol Cell Endocrinol.* 2007 Jan 29;264(1-2):164-70.
- [2]. Coghlan MJ, et al. A novel antiinflammatory maintains glucocorticoid efficacy with reduced side effects. *Mol Endocrinol.* 2003 May;17(5):860-9.

---

**Caution: Product has not been fully validated for medical applications. For research use only.**

Tel: 609-228-6898

Fax: 609-228-5909

E-mail: [tech@MedChemExpress.com](mailto:tech@MedChemExpress.com)

Address: 1 Deer Park Dr, Suite Q, Monmouth Junction, NJ 08852, USA