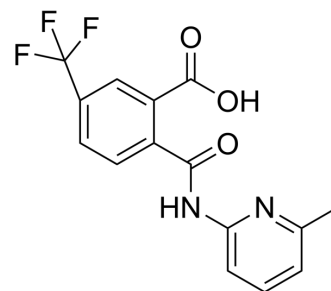


AF38469

Cat. No.:	HY-12802		
CAS No.:	1531634-31-7		
Molecular Formula:	C ₁₅ H ₁₁ F ₃ N ₂ O ₃		
Molecular Weight:	324.25		
Target:	Neurotensin Receptor		
Pathway:	GPCR/G Protein; Neuronal Signaling		
Storage:	Powder	-20°C	3 years
		4°C	2 years
	In solvent	-80°C	2 years
		-20°C	1 year



SOLVENT & SOLUBILITY

In Vitro

DMSO : ≥ 43 mg/mL (132.61 mM)
 * "≥" means soluble, but saturation unknown.

Preparing Stock Solutions	Solvent Concentration	Mass		
		1 mg	5 mg	10 mg
	1 mM	3.0840 mL	15.4202 mL	30.8404 mL
	5 mM	0.6168 mL	3.0840 mL	6.1681 mL
	10 mM	0.3084 mL	1.5420 mL	3.0840 mL

Please refer to the solubility information to select the appropriate solvent.

In Vivo

- Add each solvent one by one: 5% DMSO >> 40% PEG300 >> 5% Tween-80 >> 50% saline
 Solubility: 2.5 mg/mL (7.71 mM); Suspended solution; Need ultrasonic
- Add each solvent one by one: 10% DMSO >> 90% corn oil
 Solubility: ≥ 2.08 mg/mL (6.41 mM); Clear solution

BIOLOGICAL ACTIVITY

Description

AF38469 is a selective, orally bioavailable Sortilin inhibitor with an IC₅₀ value of 330 nM.

IC₅₀ & Target

IC₅₀:330 nM (Sortilin)^[1]

In Vivo

AF38469 (1 mg/kg; i.v.) has a low volume of distribution (blood volume of 0.7 L/kg) and low clearance (4.8 L/h/kg), and a half-life (t_{1/2}) of 1.2 h in rat^[1].

MCE has not independently confirmed the accuracy of these methods. They are for reference only.

CUSTOMER VALIDATION

- Cell Death Dis. 2019 Feb 27;10(3):208.
- Cell Commun Signal. 2021 Nov 15;19(1):112.
- Breast Cancer Res. 2018 Nov 20;20(1):137.
- Am J Pathol. 2020 Sep;190(9):1931-1942.
- Int J Mol Sci. 2023, 24(3), 2030.

See more customer validations on www.MedChemExpress.com

REFERENCES

[1]. Schroder TJ, et al. The identification of AF38469: an orally bioavailable inhibitor of the VPS10P family sorting receptor Sortilin. Bioorg Med Chem Lett. 2014 Jan 1;24(1):177-80.

Caution: Product has not been fully validated for medical applications. For research use only.

Tel: 609-228-6898

Fax: 609-228-5909

E-mail: tech@MedChemExpress.com

Address: 1 Deer Park Dr, Suite Q, Monmouth Junction, NJ 08852, USA