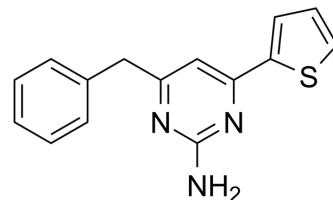


AChE/hCA I/II-IN-1

Cat. No.:	HY-149012
CAS No.:	2049681-10-7
Molecular Formula:	C ₁₅ H ₁₃ N ₃ S
Molecular Weight:	267.35
Target:	AChE; Carbonic Anhydrase
Pathway:	Neuronal Signaling; Metabolic Enzyme/Protease
Storage:	Please store the product under the recommended conditions in the Certificate of Analysis.



BIOLOGICAL ACTIVITY

Description

AChE/hCA I/II-IN-1 (Compound 6) is a potent inhibitor of AChE/Hca with IC₅₀ values of 22.21, 60.79 and 66.64 nM for AChE, Hca α and Hca β . AChE/hCA I/II-IN-1 can be used for the research for glaucoma, Alzheimer's disease, diabetes^[1].

REFERENCES

[1]. Gülçin I, et al. Synthesis of nitrogen, phosphorus, selenium and sulfur-containing heterocyclic compounds - Determination of their carbonic anhydrase, acetylcholinesterase, butyrylcholinesterase and α -glycosidase inhibition properties. *Bioorg Chem.* 2020 Oct;103:104171.

Caution: Product has not been fully validated for medical applications. For research use only.

Tel: 609-228-6898

Fax: 609-228-5909

E-mail: tech@MedChemExpress.com

Address: 1 Deer Park Dr, Suite Q, Monmouth Junction, NJ 08852, USA