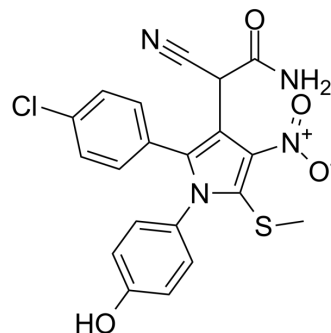


AChE-IN-25

Cat. No.:	HY-151338
CAS No.:	2835538-69-5
Molecular Formula:	C ₂₀ H ₁₅ ClN ₄ O ₄ S
Molecular Weight:	442.88
Target:	Cholinesterase (ChE)
Pathway:	Neuronal Signaling
Storage:	Please store the product under the recommended conditions in the Certificate of Analysis.



BIOLOGICAL ACTIVITY

Description	AChE-IN-25 is a potent, selective and uncompetitive acetylcholinesterase (AChE) inhibitor (IC ₅₀ =2.95 μM). AChE-IN-25 can be used in Alzheimer's disease research ^[1] .
IC ₅₀ & Target	IC ₅₀ : 2.95 μM (AChE) ^[1]

REFERENCES

[1]. Hormoz Pourtaher, et al. Design, synthesis, in silico and biological evaluations of novel polysubstituted pyrroles as selective acetylcholinesterase inhibitors against Alzheimer's disease. Sci Rep. 2022 Sep 8;12(1):15236.

Caution: Product has not been fully validated for medical applications. For research use only.

Tel: 609-228-6898

Fax: 609-228-5909

E-mail: tech@MedChemExpress.com

Address: 1 Deer Park Dr, Suite Q, Monmouth Junction, NJ 08852, USA