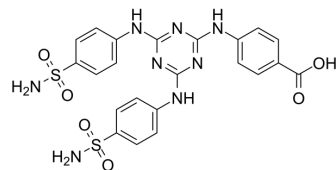


AChE-IN-20

Cat. No.:	HY-147952
CAS No.:	2428389-65-3
Molecular Formula:	C ₂₂ H ₂₀ N ₈ O ₆ S ₂
Molecular Weight:	556.57
Target:	Cholinesterase (ChE)
Pathway:	Neuronal Signaling
Storage:	Please store the product under the recommended conditions in the Certificate of Analysis.



BIOLOGICAL ACTIVITY

Description	AChE-IN-20 (compound M26) is a potent AChE inhibitor with IC ₅₀ value of 397.32 nM and with K _i value of 335.76 nM. AChE-IN-20 shows inhibition potency against hCA I, hCA II and α-GLY with IC ₅₀ values of 84.14, 69.24 and 52.08 nM and with K _i values of 97.86, 76.23 and 57.93 nM, respectively ^[1] .	
IC ₅₀ & Target	AChE 397.32 nM (IC ₅₀)	AChE 335.76 nM (K _i)

REFERENCES

[1]. Lolak N, et al. Synthesis, characterization, inhibition effects, and molecular docking studies as acetylcholinesterase, α-glycosidase, and carbonic anhydrase inhibitors of novel benzenesulfonamides incorporating 1,3,5-triazine structural motifs. *Bioorg Chem.* 2020 Jul;100:103897.

Caution: Product has not been fully validated for medical applications. For research use only.

Tel: 609-228-6898

Fax: 609-228-5909

E-mail: tech@MedChemExpress.com

Address: 1 Deer Park Dr, Suite Q, Monmouth Junction, NJ 08852, USA