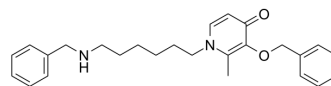


## AChE/BChE-IN-8

Cat. No.:	HY-146668
CAS No.:	2421120-96-7
Molecular Formula:	C <sub>26</sub> H <sub>32</sub> N <sub>2</sub> O <sub>2</sub>
Molecular Weight:	404.54
Target:	AChE
Pathway:	Neuronal Signaling
Storage:	Please store the product under the recommended conditions in the Certificate of Analysis.



### BIOLOGICAL ACTIVITY

Description	AChE/BChE-IN-8 (Compound 5a) is an uncompetitive AChE and mixed BChE inhibitor with K <sub>i</sub> values of 0.788 μM and 2.364 μM against <i>Electrophorus electricus</i> AChE (EeAChE) and equine BChE (eqBChE), respectively. AChE/BChE-IN-8 can cross the BBB and has low cytotoxicity <sup>[1]</sup> .
IC <sub>50</sub> & Target	K <sub>i</sub> : 0.788 μM (EeAChE), 2.364 μM (eqBChE) <sup>[1]</sup>

### REFERENCES

[1]. Bortolami M, et al. New deferiprone derivatives as multi-functional cholinesterase inhibitors: design, synthesis and in vitro evaluation. Eur J Med Chem. 2020 Jul 15;198:112350.

**Caution: Product has not been fully validated for medical applications. For research use only.**

Tel: 609-228-6898

Fax: 609-228-5909

E-mail: tech@MedChemExpress.com

Address: 1 Deer Park Dr, Suite Q, Monmouth Junction, NJ 08852, USA