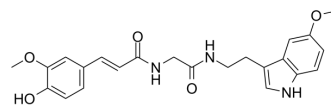


## AChE/BChE-IN-2

Cat. No.:	HY-144753
CAS No.:	2761991-42-6
Molecular Formula:	C <sub>23</sub> H <sub>25</sub> N <sub>3</sub> O <sub>5</sub>
Molecular Weight:	423.46
Target:	AChE
Pathway:	Neuronal Signaling
Storage:	Please store the product under the recommended conditions in the Certificate of Analysis.



### BIOLOGICAL ACTIVITY

#### Description

AChE/BChE-IN-2 (Compound 13b) is a potent inhibitor of AChE/BChE (AChE IC<sub>50</sub> = 0.96 ± 0.14 μM, BChE IC<sub>50</sub> = 1.23 ± 0.23 μM). AChE/BChE-IN-2 has the potential for the research of AD diseases<sup>[1]</sup>.

### REFERENCES

[1]. Singh YP, et al. Further SAR studies on natural template based neuroprotective molecules for the treatment of Alzheimer's disease. Bioorg Med Chem. 2021 Sep 15;46:116385. doi: 10.1016/j.bmc.2021.116385.

**Caution: Product has not been fully validated for medical applications. For research use only.**

Tel: 609-228-6898

Fax: 609-228-5909

E-mail: tech@MedChemExpress.com

Address: 1 Deer Park Dr, Suite Q, Monmouth Junction, NJ 08852, USA