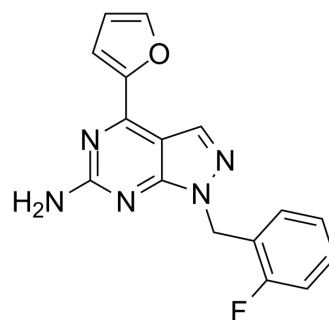


A2A receptor antagonist 1

Cat. No.:	HY-102024		
CAS No.:	443103-97-7		
Molecular Formula:	C ₁₆ H ₁₂ FN ₅ O		
Molecular Weight:	309.3		
Target:	Adenosine Receptor		
Pathway:	GPCR/G Protein		
Storage:	Powder	-20°C	3 years
		4°C	2 years
	In solvent	-80°C	2 years
		-20°C	1 year



SOLVENT & SOLUBILITY

In Vitro	DMSO : 25 mg/mL (80.83 mM; Need ultrasonic)					
		Solvent Concentration	Mass	1 mg	5 mg	10 mg
	Preparing Stock Solutions	1 mM		3.2331 mL	16.1655 mL	32.3311 mL
		5 mM		0.6466 mL	3.2331 mL	6.4662 mL
10 mM			0.3233 mL	1.6166 mL	3.2331 mL	
Please refer to the solubility information to select the appropriate solvent.						
In Vivo	<ol style="list-style-type: none"> Add each solvent one by one: 10% DMSO >> 40% PEG300 >> 5% Tween-80 >> 45% saline Solubility: ≥ 2.5 mg/mL (8.08 mM); Clear solution Add each solvent one by one: 10% DMSO >> 90% (20% SBE-β-CD in saline) Solubility: ≥ 2.5 mg/mL (8.08 mM); Clear solution Add each solvent one by one: 10% DMSO >> 90% corn oil Solubility: ≥ 2.5 mg/mL (8.08 mM); Clear solution 					

BIOLOGICAL ACTIVITY

Description	A2A receptor antagonist 1 (CPI-444 analog) is an antagonist of both adenosine A _{2A} receptor and A ₁ receptor with K _i values of 4 and 264 nM, respectively ^[1] .
IC₅₀ & Target	Ki: 4 nM (adenosine A _{2A} receptor), 264 nM (A ₁ receptor) ^[1]
In Vitro	A2A receptor antagonist 1 (CPI-444 analog) is a potent adenosine A _{2A} receptor antagonist, selective over the A ₁ receptor and demonstrates its binding activity with K _i values of 4 and 264 nM, respectively ^[1] .

MCE has not independently confirmed the accuracy of these methods. They are for reference only.

REFERENCES

[1]. Gillespie RJ, et al. Antagonists of the human adenosine A2A receptor. Part 3: Design and synthesis of pyrazolo[3,4-d]pyrimidines, pyrrolo[2,3-d]pyrimidines and 6-aryl purines. *Bioorg Med Chem Lett*. 2008 May 1;18(9):2924-9.

Caution: Product has not been fully validated for medical applications. For research use only.

Tel: 609-228-6898

Fax: 609-228-5909

E-mail: tech@MedChemExpress.com

Address: 1 Deer Park Dr, Suite Q, Monmouth Junction, NJ 08852, USA