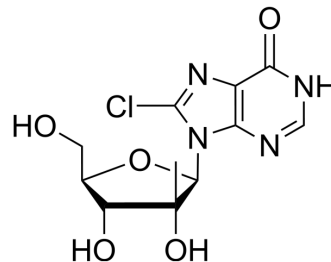


8-Chloro-2'-beta-C-methyl inosine

Cat. No.:	HY-152508
CAS No.:	1106012-39-8
Molecular Formula:	C ₁₁ H ₁₃ ClN ₄ O ₅
Molecular Weight:	316.7
Target:	Nucleoside Antimetabolite/Analog
Pathway:	Cell Cycle/DNA Damage
Storage:	Please store the product under the recommended conditions in the Certificate of Analysis.



BIOLOGICAL ACTIVITY

Description

8-Chloro-2'-beta-C-methyl inosine is a purine nucleoside analog. Purine nucleoside analogs have broad antitumor activity targeting indolent lymphoid malignancies. Anticancer mechanisms in this process rely on inhibition of DNA synthesis, induction of apoptosis, etc^[1].

REFERENCES

[1]. Robak T, Robak P. Purine nucleoside analogs in the treatment of rarer chronic lymphoid leukemias. *Curr Pharm Des.* 2012;18(23):3373-88.

Caution: Product has not been fully validated for medical applications. For research use only.

Tel: 609-228-6898

Fax: 609-228-5909

E-mail: tech@MedChemExpress.com

Address: 1 Deer Park Dr, Suite Q, Monmouth Junction, NJ 08852, USA