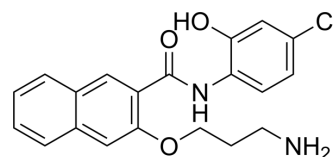


## 653-47

Cat. No.:	HY-134598
CAS No.:	1224678-75-4
Molecular Formula:	C <sub>20</sub> H <sub>19</sub> ClN <sub>2</sub> O <sub>3</sub>
Molecular Weight:	370.83
Target:	Epigenetic Reader Domain
Pathway:	Epigenetics
Storage:	Please store the product under the recommended conditions in the Certificate of Analysis.



## BIOLOGICAL ACTIVITY

Description	653-47, a potentiator, significantly potentiates the cAMP-response element binding protein (CREB) inhibitory activity of 666-15. 653-47 is also a very weak CREB inhibitor with IC <sub>50</sub> of 26.3 μM <sup>[1]</sup> .
In Vitro	653-47 (5-10 μM) synergistically inhibits CREB-mediated gene transcription with 666-15 <sup>[1]</sup> . MCE has not independently confirmed the accuracy of these methods. They are for reference only.

## REFERENCES

[1]. Xie F, et al. Discovery of a Synergistic Inhibitor of cAMP-Response Element Binding Protein (CREB)-Mediated Gene Transcription with 666-15. J Med Chem. 2019;62(24):11423-11429.

**Caution: Product has not been fully validated for medical applications. For research use only.**

Tel: 609-228-6898

Fax: 609-228-5909

E-mail: tech@MedChemExpress.com

Address: 1 Deer Park Dr, Suite Q, Monmouth Junction, NJ 08852, USA