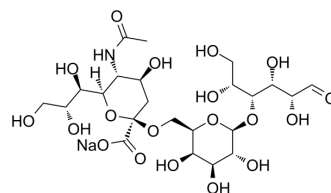


6'-Sialyllactose sodium

Cat. No.:	HY-137335
CAS No.:	157574-76-0
Molecular Formula:	C ₂₃ H ₃₈ NNaO ₁₉
Molecular Weight:	655.53
Target:	Bacterial
Pathway:	Anti-infection
Storage:	4°C, sealed storage, away from moisture * In solvent : -80°C, 6 months; -20°C, 1 month (sealed storage, away from moisture)



SOLVENT & SOLUBILITY

In Vitro	H ₂ O : 125 mg/mL (190.69 mM; Need ultrasonic)					
	Preparing Stock Solutions	Solvent	Mass	1 mg	5 mg	10 mg
		Concentration				
		1 mM		1.5255 mL	7.6274 mL	15.2548 mL
		5 mM		0.3051 mL	1.5255 mL	3.0510 mL
10 mM		0.1525 mL	0.7627 mL	1.5255 mL		
Please refer to the solubility information to select the appropriate solvent.						
In Vivo	1. Add each solvent one by one: PBS Solubility: 12.5 mg/mL (19.07 mM); Clear solution; Need ultrasonic					

BIOLOGICAL ACTIVITY

Description	6'-Sialyllactose (sodium), a predominant milk oligosaccharide, reduces the internalisation of <i>Pseudomonas aeruginosa</i> in human pneumocytes ^[1] .
--------------------	---

REFERENCES

[1]. MariarosariaMarotta, et al. The predominant milk oligosaccharide 6'-sialyllactose reduces the internalisation of *Pseudomonas aeruginosa* in human pneumocytes. *Journal of Functional Foods* Volume 6, January 2014, Pages 367-373.

Caution: Product has not been fully validated for medical applications. For research use only.

Tel: 609-228-6898

Fax: 609-228-5909

E-mail: tech@MedChemExpress.com

Address: 1 Deer Park Dr, Suite Q, Monmouth Junction, NJ 08852, USA