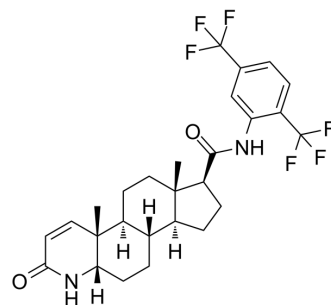


## 5 $\beta$ -Dutasteride

Cat. No.:	HY-135386
CAS No.:	957229-52-6
Molecular Formula:	C <sub>27</sub> H <sub>30</sub> F <sub>6</sub> N <sub>2</sub> O <sub>2</sub>
Molecular Weight:	528.53
Target:	Drug Metabolite
Pathway:	Metabolic Enzyme/Protease
Storage:	Please store the product under the recommended conditions in the Certificate of Analysis.



### BIOLOGICAL ACTIVITY

#### Description

5 $\beta$ -Dutasteride is the S configuration of Dutasteride. 5 $\beta$ -Dutasteride is a potent inhibitor of both 5 alpha-reductase isozymes [1].

### REFERENCES

[1]. Lazier CB, et al. Dutasteride, the dual 5alpha-reductase inhibitor, inhibits androgen action and promotes cell death in the LNCaP prostate cancer cell line. Prostate. 2004 Feb 1;58(2):130-44.

**Caution: Product has not been fully validated for medical applications. For research use only.**

Tel: 609-228-6898

Fax: 609-228-5909

E-mail: tech@MedChemExpress.com

Address: 1 Deer Park Dr, Suite Q, Monmouth Junction, NJ 08852, USA