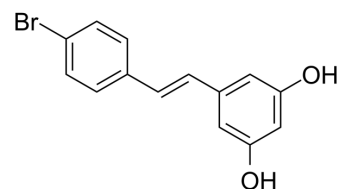


## 4'-Bromo-resveratrol

Cat. No.:	HY-124113
CAS No.:	1224713-90-9
Molecular Formula:	C <sub>14</sub> H <sub>11</sub> BrO <sub>2</sub>
Molecular Weight:	291.14
Target:	Sirtuin; Apoptosis
Pathway:	Cell Cycle/DNA Damage; Epigenetics; Apoptosis
Storage:	4°C, protect from light * In solvent : -80°C, 6 months; -20°C, 1 month (protect from light)



### SOLVENT & SOLUBILITY

#### In Vitro

DMSO : 250 mg/mL (858.69 mM; Need ultrasonic)

Concentration	Mass			
	1 mg	5 mg	10 mg	
1 mM	3.4348 mL	17.1739 mL	34.3477 mL	
5 mM	0.6870 mL	3.4348 mL	6.8695 mL	
10 mM	0.3435 mL	1.7174 mL	3.4348 mL	

Please refer to the solubility information to select the appropriate solvent.

### BIOLOGICAL ACTIVITY

#### Description

4'-Bromo-resveratrol is a potent and dual inhibitor Sirtuin-1 and Sirtuin-3. 4'-Bromo-resveratrol inhibits melanoma cell growth through mitochondrial metabolic reprogramming. 4'-Bromo-resveratrol imparts antiproliferative effects in melanoma cells through a metabolic reprogramming and affecting the cell cycle and apoptosis signaling<sup>[1]</sup>.

### REFERENCES

[1]. George J, et al. 4'-Bromo-resveratrol, a dual Sirtuin-1 and Sirtuin-3 inhibitor, inhibits melanoma cell growth through mitochondrial metabolic reprogramming. Mol Carcinog. 2019;58(10):1876-1885.

**Caution: Product has not been fully validated for medical applications. For research use only.**

Tel: 609-228-6898

Fax: 609-228-5909

E-mail: tech@MedChemExpress.com

Address: 1 Deer Park Dr, Suite Q, Monmouth Junction, NJ 08852, USA