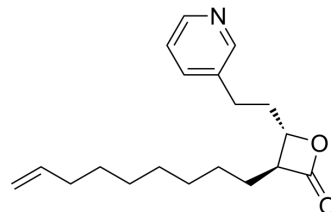


## (3S,4S)-A2-32-01

**Cat. No.:** HY-111532B  
**Molecular Formula:** C<sub>19</sub>H<sub>27</sub>NO<sub>2</sub>  
**Molecular Weight:** 301.42  
**Target:** ClpP  
**Pathway:** Cell Cycle/DNA Damage  
**Storage:** -20°C, protect from light  
 \* In solvent : -80°C, 6 months; -20°C, 1 month (protect from light)



### SOLVENT & SOLUBILITY

#### In Vitro

DMSO : 100 mg/mL (331.76 mM; Need ultrasonic)

Preparing Stock Solutions	Solvent Concentration	Mass		
		1 mg	5 mg	10 mg
	1 mM	3.3176 mL	16.5882 mL	33.1763 mL
	5 mM	0.6635 mL	3.3176 mL	6.6353 mL
	10 mM	0.3318 mL	1.6588 mL	3.3176 mL

Please refer to the solubility information to select the appropriate solvent.

#### In Vivo

- Add each solvent one by one: 10% DMSO >> 40% PEG300 >> 5% Tween-80 >> 45% saline  
Solubility: 1.25 mg/mL (4.15 mM); Suspended solution; Need ultrasonic
- Add each solvent one by one: 10% DMSO >> 90% (20% SBE-β-CD in saline)  
Solubility: ≥ 1.25 mg/mL (4.15 mM); Clear solution
- Add each solvent one by one: 10% DMSO >> 90% corn oil  
Solubility: ≥ 1.25 mg/mL (4.15 mM); Clear solution

### BIOLOGICAL ACTIVITY

#### Description

(3S,4S)-A2-32-01 (compound 24(S,S)), a less active (S,S)-enantiomer of A2-32-01. A2-32-01 is a potent caseinolytic protein proteases (ClpP) inhibitor<sup>[1]</sup>.

### REFERENCES

[1]. Malte Gersch, et al. The mechanism of caseinolytic protease (ClpP) inhibition. *Angew Chem Int Ed Engl.* 2013 Mar 4;52(10):3009-14.

---

**Caution: Product has not been fully validated for medical applications. For research use only.**

Tel: 609-228-6898

Fax: 609-228-5909

E-mail: [tech@MedChemExpress.com](mailto:tech@MedChemExpress.com)

Address: 1 Deer Park Dr, Suite Q, Monmouth Junction, NJ 08852, USA