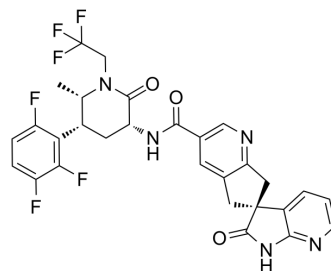


(3R,5R,6S)-Atogepant

Cat. No.:	HY-109022A		
Molecular Formula:	C ₂₉ H ₂₃ F ₆ N ₅ O ₃		
Molecular Weight:	603.52		
Target:	CGRP Receptor		
Pathway:	GPCR/G Protein; Neuronal Signaling		
Storage:	Powder	-20°C	3 years
	In solvent	-80°C	6 months
		-20°C	1 month



SOLVENT & SOLUBILITY

In Vitro

DMSO : 50 mg/mL (82.85 mM; Need ultrasonic)

Preparing Stock Solutions	Solvent Concentration	Mass		
		1 mg	5 mg	10 mg
	1 mM	1.6569 mL	8.2847 mL	16.5695 mL
	5 mM	0.3314 mL	1.6569 mL	3.3139 mL
	10 mM	0.1657 mL	0.8285 mL	1.6569 mL

Please refer to the solubility information to select the appropriate solvent.

In Vivo

- Add each solvent one by one: 10% DMSO >> 40% PEG300 >> 5% Tween-80 >> 45% saline
Solubility: ≥ 1.67 mg/mL (2.77 mM); Clear solution
- Add each solvent one by one: 10% DMSO >> 90% (20% SBE-β-CD in saline)
Solubility: ≥ 1.67 mg/mL (2.77 mM); Clear solution
- Add each solvent one by one: 10% DMSO >> 90% corn oil
Solubility: ≥ 1.67 mg/mL (2.77 mM); Clear solution

BIOLOGICAL ACTIVITY

Description

(3R,5R,6S)-Atogepant ((3R,5R,6S)-MK-8031) is the enantiomer of [Atogepant](#) (HY-109022). [Atogepant](#) is a calcitonin gene-related peptide receptor (CGRP) antagonist. [Atogepant](#) can be used for researching migraine.

Caution: Product has not been fully validated for medical applications. For research use only.

Tel: 609-228-6898

Fax: 609-228-5909

E-mail: tech@MedChemExpress.com

Address: 1 Deer Park Dr, Suite Q, Monmouth Junction, NJ 08852, USA