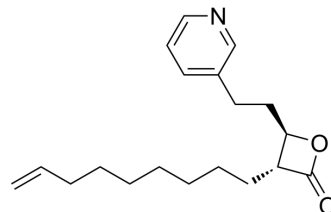


(3R,4R)-A2-32-01

Cat. No.:	HY-111532		
CAS No.:	1359752-95-6		
Molecular Formula:	C ₁₉ H ₂₇ NO ₂		
Molecular Weight:	301.42		
Target:	Bacterial; ClpP		
Pathway:	Anti-infection; Cell Cycle/DNA Damage		
Storage:	Pure form	-20°C	3 years
		4°C	2 years
	In solvent	-80°C	6 months
		-20°C	1 month



SOLVENT & SOLUBILITY

In Vitro

DMSO : 200 mg/mL (663.53 mM; Need ultrasonic)

Preparing Stock Solutions	Solvent Concentration	Mass		
		1 mg	5 mg	10 mg
	1 mM	3.3176 mL	16.5882 mL	33.1763 mL
	5 mM	0.6635 mL	3.3176 mL	6.6353 mL
	10 mM	0.3318 mL	1.6588 mL	3.3176 mL

Please refer to the solubility information to select the appropriate solvent.

In Vivo

- Add each solvent one by one: 10% DMSO >> 40% PEG300 >> 5% Tween-80 >> 45% saline
Solubility: ≥ 5 mg/mL (16.59 mM); Clear solution
- Add each solvent one by one: 10% DMSO >> 90% (20% SBE-β-CD in saline)
Solubility: ≥ 5 mg/mL (16.59 mM); Clear solution
- Add each solvent one by one: 10% DMSO >> 90% corn oil
Solubility: ≥ 5 mg/mL (16.59 mM); Clear solution

BIOLOGICAL ACTIVITY

Description

(3R,4R)-A2-32-01 (compound 24(R,R)), the (R,R)-enantiomer of A2-32-01, is a *Staphylococcus aureus* caseinolytic protease (SaClpP) inhibitor^[1].

CUSTOMER VALIDATION

-
- Autophagy. 2021 Oct 31;1-17.

See more customer validations on www.MedChemExpress.com

REFERENCES

[1]. Malte Gersch, et al. The mechanism of caseinolytic protease (ClpP) inhibition. Angew Chem Int Ed Engl. 2013 Mar 4;52(10):3009-14.

Caution: Product has not been fully validated for medical applications. For research use only.

Tel: 609-228-6898

Fax: 609-228-5909

E-mail: tech@MedChemExpress.com

Address: 1 Deer Park Dr, Suite Q, Monmouth Junction, NJ 08852, USA