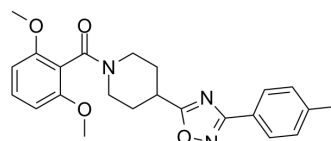


## 20S Proteasome-IN-1

<b>Cat. No.:</b>	HY-139331
<b>CAS No.:</b>	858557-69-4
<b>Molecular Formula:</b>	C <sub>23</sub> H <sub>25</sub> N <sub>3</sub> O <sub>4</sub>
<b>Molecular Weight:</b>	407.46
<b>Target:</b>	Proteasome
<b>Pathway:</b>	Metabolic Enzyme/Protease
<b>Storage:</b>	4°C, protect from light * In solvent : -80°C, 6 months; -20°C, 1 month (protect from light)



### SOLVENT & SOLUBILITY

<b>In Vitro</b>	DMSO : 31.25 mg/mL (76.69 mM); ultrasonic and warming and heat to 60°C																							
	<table border="1"> <thead> <tr> <th rowspan="2">Solvent Concentration</th> <th colspan="3">Mass</th> </tr> <tr> <th>1 mg</th> <th>5 mg</th> <th>10 mg</th> </tr> </thead> <tbody> <tr> <td><b>Preparing Stock Solutions</b></td> <td></td> <td></td> <td></td> </tr> <tr> <td>1 mM</td> <td>2.4542 mL</td> <td>12.2711 mL</td> <td>24.5423 mL</td> </tr> <tr> <td>5 mM</td> <td>0.4908 mL</td> <td>2.4542 mL</td> <td>4.9085 mL</td> </tr> <tr> <td>10 mM</td> <td>0.2454 mL</td> <td>1.2271 mL</td> <td>2.4542 mL</td> </tr> </tbody> </table>	Solvent Concentration	Mass			1 mg	5 mg	10 mg	<b>Preparing Stock Solutions</b>				1 mM	2.4542 mL	12.2711 mL	24.5423 mL	5 mM	0.4908 mL	2.4542 mL	4.9085 mL	10 mM	0.2454 mL	1.2271 mL	2.4542 mL
Solvent Concentration	Mass																							
	1 mg	5 mg	10 mg																					
<b>Preparing Stock Solutions</b>																								
1 mM	2.4542 mL	12.2711 mL	24.5423 mL																					
5 mM	0.4908 mL	2.4542 mL	4.9085 mL																					
10 mM	0.2454 mL	1.2271 mL	2.4542 mL																					
	Please refer to the solubility information to select the appropriate solvent.																							
<b>In Vivo</b>	<ol style="list-style-type: none"> <li>Add each solvent one by one: 10% DMSO &gt;&gt; 40% PEG300 &gt;&gt; 5% Tween-80 &gt;&gt; 45% saline Solubility: ≥ 2.08 mg/mL (5.10 mM); Clear solution</li> <li>Add each solvent one by one: 10% DMSO &gt;&gt; 90% (20% SBE-β-CD in saline) Solubility: ≥ 2.08 mg/mL (5.10 mM); Clear solution</li> <li>Add each solvent one by one: 10% DMSO &gt;&gt; 90% corn oil Solubility: ≥ 2.08 mg/mL (5.10 mM); Clear solution</li> </ol>																							

### BIOLOGICAL ACTIVITY

<b>Description</b>	20S Proteasome-IN-1 is a 26S proteasome inhibitor extracted from patent WO2006128196A2 compound 2. 20S Proteasome-IN-1 has the potential for cancer, immune-related disorders, inflammation, ischemic conditions, neurodegenerative disorders and other diseases research <sup>[1]</sup> .
--------------------	--

### REFERENCES

[1]. Parlati F, et, al. Novel substrate for rpn 11 enzymatic activity. WO2006128196A2.

---

**Caution: Product has not been fully validated for medical applications. For research use only.**

Tel: 609-228-6898

Fax: 609-228-5909

E-mail: [tech@MedChemExpress.com](mailto:tech@MedChemExpress.com)

Address: 1 Deer Park Dr, Suite Q, Monmouth Junction, NJ 08852, USA