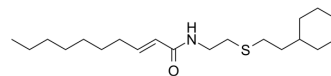


2-(E-2-decenoylamino)ethyl 2-(cyclohexylethyl) sulfide

Cat. No.:	HY-100287
CAS No.:	137089-36-2
Molecular Formula:	C ₂₀ H ₃₇ NOS
Molecular Weight:	339.58
Target:	Prostaglandin Receptor; Phospholipase
Pathway:	GPCR/G Protein; Metabolic Enzyme/Protease
Storage:	Please store the product under the recommended conditions in the Certificate of Analysis.



BIOLOGICAL ACTIVITY

Description	2-(E-2-decenoylamino)ethyl 2-(cyclohexylethyl) sulfide is a compound that inhibits stress-induced ulcer and low toxicity, and can maintain the content of phospholipase A2 and prostaglandin E2 in ulcerated rats induced by water immersed restrained stress.		
IC₅₀ & Target	PGE ₂	PGI ₂	PLA ₂
In Vivo	<p>2-(E-2-decenoylamino)ethyl 2-(cyclohexylethyl) sulfide (compd.III-1α, 100 mg/kg, p.o.) maintains the relative content of Fr.I hexose, lipid peroxide and phospholipase A2 (PLA2) in normal level in ulcerated rats induced by water immersed restrained stress via dosing twice a day for 3 day (b.i.d. for 3 d). 2-(E-2-decenoylamino)ethyl 2-(cyclohexylethyl) sulfide (100 mg/kg, p.o.) reduces the hexosamine content equally with the control group 4 h after the stress loading, and then markedly increases 7 h after stress loading. 2-(E-2-decenoylamino)ethyl 2-(cyclohexylethyl) sulfide (25 mg/kg, p.o.) blocks the reduction of prostaglandin E2 (PGE2) and PGI2 in early phase and accelerates the increase of PGE2 and PGI2 in the late phase of the stress. 2-(E-2-decenoylamino)ethyl 2-(cyclohexylethyl) sulfide (25 mg/kg, p.o.) also significantly accelerates the cell proliferation in fundic glands in gastric mucosa of mice^[1].</p> <p>MCE has not independently confirmed the accuracy of these methods. They are for reference only.</p>		

REFERENCES

[1]. Kohda I, et al. Further studies on the anti-ulcerogenic effects of compound, 2-(E-2-decenoylamino)ethyl 2-(cyclohexylethyl) sulfide. Chem Pharm Bull (Tokyo). 1991 Jul;39(7):1832-6.

Caution: Product has not been fully validated for medical applications. For research use only.

Tel: 609-228-6898

Fax: 609-228-5909

E-mail: tech@MedChemExpress.com

Address: 1 Deer Park Dr, Suite Q, Monmouth Junction, NJ 08852, USA