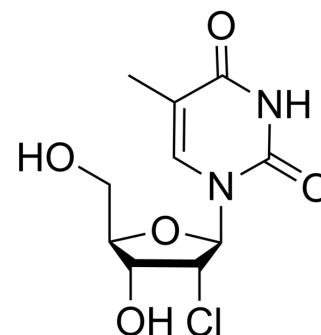


2'-Chlorothymidine

| | |
|--------------------|---|
| Cat. No.: | HY-152639 |
| CAS No.: | 54898-34-9 |
| Molecular Formula: | C ₁₀ H ₁₃ ClN ₂ O ₅ |
| Molecular Weight: | 276.67 |
| Target: | Nucleoside Antimetabolite/Analog |
| Pathway: | Cell Cycle/DNA Damage |
| Storage: | Please store the product under the recommended conditions in the Certificate of Analysis. |



BIOLOGICAL ACTIVITY

Description

2'-Chlorothymidine is a thymidine analogue. Analogs of this series have insertional activity towards replicated DNA. They can be used to label cells and track DNA synthesis^[1].

REFERENCES

[1]. Cavanagh BL, et al. Thymidine analogues for tracking DNA synthesis. *Molecules*. 2011 Sep 15;16(9):7980-93.

Caution: Product has not been fully validated for medical applications. For research use only.

Tel: 609-228-6898

Fax: 609-228-5909

E-mail: tech@MedChemExpress.com

Address: 1 Deer Park Dr, Suite Q, Monmouth Junction, NJ 08852, USA