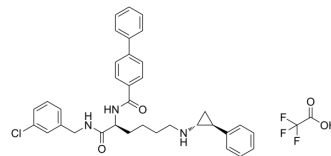


(1R,2S)-NCD38 TFA

Cat. No.:	HY-112304A
CAS No.:	2078047-42-2
Molecular Formula:	C ₃₇ H ₃₇ ClF ₃ N ₃ O ₄
Molecular Weight:	680.16
Target:	Histone Demethylase
Pathway:	Epigenetics
Storage:	Please store the product under the recommended conditions in the Certificate of Analysis.



BIOLOGICAL ACTIVITY

Description	(1R,2S)-NCD38 TFA is an enantiomer of NCD38 TFA. NCD38 TFA is a LSD1-selective inhibitor ^{[1][2]} .
-------------	--

REFERENCES

[1]. G R Sareddy, et al. Novel KDM1A inhibitors induce differentiation and apoptosis of glioma stem cells via unfolded protein response pathway. *Oncogene*. 2017 Apr 27;36(17):2423-2434.

[2]. Yosuke Ota , et al. Design, synthesis and evaluation of γ -turn mimetics as LSD1-selective inhibitors. *Bioorg Med Chem*. 2018 Feb 1;26(3):775-785.

Caution: Product has not been fully validated for medical applications. For research use only.

Tel: 609-228-6898

Fax: 609-228-5909

E-mail: tech@MedChemExpress.com

Address: 1 Deer Park Dr, Suite Q, Monmouth Junction, NJ 08852, USA