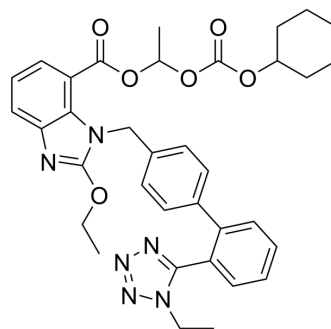


1H-1-Ethyl Candesartan Cilexetil

Cat. No.:	HY-135180
CAS No.:	914613-35-7
Molecular Formula:	C ₃₅ H ₃₈ N ₆ O ₆
Molecular Weight:	638.71
Target:	Drug Metabolite
Pathway:	Metabolic Enzyme/Protease
Storage:	Please store the product under the recommended conditions in the Certificate of Analysis.



BIOLOGICAL ACTIVITY

Description

1H-1-Ethyl Candesartan Cilexetil is a potential impurity found in bulk preparations of Candesartan Cilexetil (HY-17505).

Caution: Product has not been fully validated for medical applications. For research use only.

Tel: 609-228-6898

Fax: 609-228-5909

E-mail: tech@MedChemExpress.com

Address: 1 Deer Park Dr, Suite Q, Monmouth Junction, NJ 08852, USA