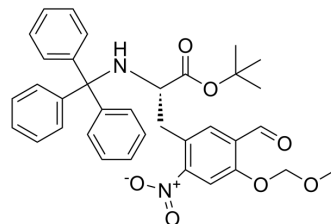


## [18F]-Labeled L-dopa precursor

Cat. No.:	HY-141647
CAS No.:	1614253-58-5
Molecular Formula:	C <sub>35</sub> H <sub>36</sub> N <sub>2</sub> O <sub>7</sub>
Molecular Weight:	596.67
Target:	Dopamine Receptor
Pathway:	GPCR/G Protein; Neuronal Signaling
Storage:	Please store the product under the recommended conditions in the Certificate of Analysis.



### BIOLOGICAL ACTIVITY

#### Description

[18F]-Labeled L-dopa precursor is a precursor for synthesis of 18F-labeled L-dopa extracted from patent WO2014095739A1, example 8<sup>[1]</sup>.

### REFERENCES

[1]. Hoepfing A, et, al. Precursors and process for the production of 18f-labelled amino acids. WO2014095739A1.

**Caution: Product has not been fully validated for medical applications. For research use only.**

Tel: 609-228-6898

Fax: 609-228-5909

E-mail: tech@MedChemExpress.com

Address: 1 Deer Park Dr, Suite Q, Monmouth Junction, NJ 08852, USA