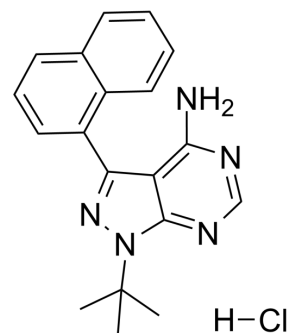


## 1-Naphthyl PP1 hydrochloride

Cat. No.:	HY-13941B
CAS No.:	956025-47-1
Molecular Formula:	C <sub>19</sub> H <sub>20</sub> ClN <sub>5</sub>
Molecular Weight:	353.85
Target:	Src
Pathway:	Protein Tyrosine Kinase/RTK
Storage:	4°C, sealed storage, away from moisture * In solvent : -80°C, 6 months; -20°C, 1 month (sealed storage, away from moisture)



### SOLVENT & SOLUBILITY

#### In Vitro

DMSO : ≥ 73 mg/mL (206.30 mM)  
 H<sub>2</sub>O : < 0.1 mg/mL (ultrasonic;warming;heat to 60°C) (insoluble)  
 \* "≥" means soluble, but saturation unknown.

Preparing Stock Solutions	Solvent Concentration	Mass	1 mg	5 mg	10 mg
	1 mM		2.8261 mL	14.1303 mL	28.2606 mL
	5 mM		0.5652 mL	2.8261 mL	5.6521 mL
	10 mM		0.2826 mL	1.4130 mL	2.8261 mL

Please refer to the solubility information to select the appropriate solvent.

### BIOLOGICAL ACTIVITY

#### Description

1-Naphthyl PP1 hydrochloride (1-NA-PP 1 hydrochloride) is a selective inhibitor of src family kinases. 1-Naphthyl PP1 hydrochloride inhibits v-Src and c-Fyn, c-Abl, CDK2 and CAMK II with IC<sub>50</sub>s of 1.0, 0.6, 0.6, 18 and 22 μM, respectively<sup>[1]</sup>.

### CUSTOMER VALIDATION

- Plant J. 2019 Mar;97(5):970-983.

See more customer validations on [www.MedChemExpress.com](http://www.MedChemExpress.com)

### REFERENCES

[1]. Tandon M, et al. New pyrazolopyrimidine inhibitors of protein kinase d as potent anticancer agents for prostate cancer cells. PLoS One. 2013 Sep 23;8(9):e75601.

**Caution: Product has not been fully validated for medical applications. For research use only.**

Tel: 609-228-6898

Fax: 609-228-5909

E-mail: [tech@MedChemExpress.com](mailto:tech@MedChemExpress.com)

Address: 1 Deer Park Dr, Suite Q, Monmouth Junction, NJ 08852, USA