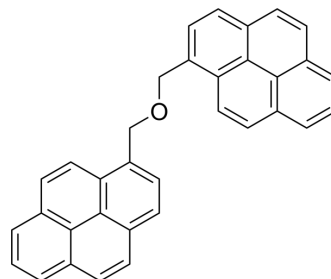


(1,1'-Dipyrenyl)dimethyl ether

Cat. No.:	HY-147170
CAS No.:	74833-81-1
Molecular Formula:	C ₃₄ H ₂₂ O
Molecular Weight:	446.54
Target:	Fluorescent Dye
Pathway:	Others
Storage:	-20°C, protect from light * In solvent : -80°C, 6 months; -20°C, 1 month (protect from light)



BIOLOGICAL ACTIVITY

Description

(1,1'-Dipyrenyl)dimethyl ether exhibits intramolecular excimer fluorescence in competition with fluorescence from the locally excited pyrene chromophore. (1,1'-Dipyrenyl)dimethyl ether is soluble in synthetic phospholipid membranes^[1].

REFERENCES

[1]. D. Georgescauld, et al. INTRAMOLECULAR EXCIMER FLUORESCENCE: A NEW PROBE OF PHASE TRANSITIONS IN SYNTHETIC PHOSPHOLIPID MEMBRANES. Volume31, Issue6, June 1980, Pages 539-545.

Caution: Product has not been fully validated for medical applications. For research use only.

Tel: 609-228-6898

Fax: 609-228-5909

E-mail: tech@MedChemExpress.com

Address: 1 Deer Park Dr, Suite Q, Monmouth Junction, NJ 08852, USA