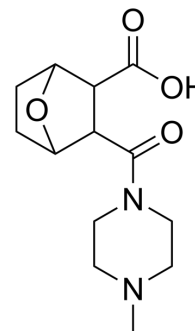


(Rac)-LB-100

Cat. No.:	HY-W328402
CAS No.:	2061038-65-9
Molecular Formula:	C ₁₃ H ₂₀ N ₂ O ₄
Molecular Weight:	268.31
Target:	Others
Pathway:	Others
Storage:	Please store the product under the recommended conditions in the Certificate of Analysis.



BIOLOGICAL ACTIVITY

Description

(Rac)-LB-100 is the racemate of LB-100. LB-100 is a protein phosphatase 2A (PP2A) inhibitor^[1].

REFERENCES

[1]. Bai X, et al. Inhibition of protein phosphatase 2A sensitizes pancreatic cancer to chemotherapy by increasing drug perfusion via HIF-1 α -VEGF mediated angiogenesis. Cancer Lett. 2014 Oct 7. pii: S0304-3835(14)00589-8.

Caution: Product has not been fully validated for medical applications. For research use only.

Tel: 609-228-6898

Fax: 609-228-5909

E-mail: tech@MedChemExpress.com

Address: 1 Deer Park Dr, Suite Q, Monmouth Junction, NJ 08852, USA