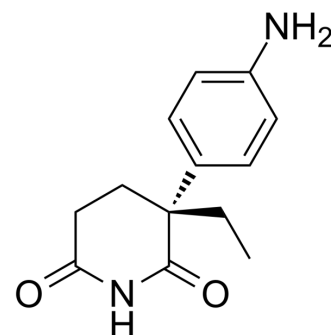


## (R)-(+)-Aminoglutethimide

|                           |   |
|---------------------------|---|
| <b>Cat. No.:</b>          | HY-W392925  |
| <b>CAS No.:</b>           | 55511-44-9  |
| <b>Molecular Formula:</b> | C <sub>13</sub> H <sub>16</sub> N <sub>2</sub> O <sub>2</sub>                             |
| <b>Molecular Weight:</b>  | 232.28  |
| <b>Target:</b>            | Cytochrome P450   |
| <b>Pathway:</b>           | Metabolic Enzyme/Protease   |
| <b>Storage:</b>           | Please store the product under the recommended conditions in the Certificate of Analysis. |



### BIOLOGICAL ACTIVITY

|                                     |   |
|-------------------------------------|---|
| <b>Description</b>                  | (R)-(+)-Aminoglutethimide is a potent and orally active aromatase inhibitor. (R)-(+)-Aminoglutethimide has the potential for the research of breast cancer <sup>[1]</sup> .   |
| <b>IC<sub>50</sub> &amp; Target</b> | Aromatase   |
| <b>In Vivo</b>                      | (R)-(+)-Aminoglutethimide (5, 50 mg/kg; p.o.) eliminates within 48 hr into urine and feces, mostly in the form of metabolites [2].<br>(R)-(+)-Aminoglutethimide (1, 10, 50 mg/kg; i.p.; 60 min before training) dose not induce any significant effect in 1 and 10 mg/kg, induces a loss of retention at 50 mg/kg in day-old chicks <sup>[3]</sup> .<br>MCE has not independently confirmed the accuracy of these methods. They are for reference only. |

### REFERENCES

- [1]. Dai Sig Im, et al. Chemo-enzymatic synthesis of (R)-(+)-aminoglutethimide by kinetic resolution of (±)-4-cyano-4-phenyl-1-hexanol. *Journal of Molecular Catalysis B: Enzymatic*. 2003, 26:185–191.
- [2]. Egger H, Bartlett F, Itterly W, Rodebaugh R, Shimanskas C. Metabolism of aminoglutethimide in the rat. *Drug Metab Dispos*. 1982 Jul-Aug;10(4):405-12.

**Caution: Product has not been fully validated for medical applications. For research use only.**

Tel: 609-228-6898

Fax: 609-228-5909

E-mail: tech@MedChemExpress.com

Address: 1 Deer Park Dr, Suite Q, Monmouth Junction, NJ 08852, USA