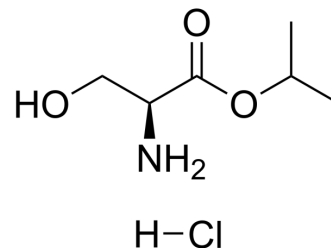


L-Serine isopropyl ester hydrochloride

Cat. No.:	HY-Z0711		
CAS No.:	37592-53-3		
Molecular Formula:	C ₆ H ₁₄ ClNO ₃		
Molecular Weight:	183.63		
Target:	Amino Acid Derivatives		
Pathway:	Others		
Storage:	Powder	-20°C	3 years
		4°C	2 years
	In solvent	-80°C	6 months
		-20°C	1 month



SOLVENT & SOLUBILITY

In Vitro

H₂O : ≥ 100 mg/mL (544.57 mM)
 * "≥" means soluble, but saturation unknown.

Concentration	Solvent	Mass		
		1 mg	5 mg	10 mg
Preparing Stock Solutions	1 mM	5.4457 mL	27.2287 mL	54.4573 mL
	5 mM	1.0891 mL	5.4457 mL	10.8915 mL
	10 mM	0.5446 mL	2.7229 mL	5.4457 mL

Please refer to the solubility information to select the appropriate solvent.

BIOLOGICAL ACTIVITY

Description

L-Serine isopropyl ester hydrochloride is a serine derivative^[1].

In Vitro

Amino acids and amino acid derivatives have been commercially used as ergogenic supplements. They influence the secretion of anabolic hormones, supply of fuel during exercise, mental performance during stress related tasks and prevent exercise induced muscle damage. They are recognized to be beneficial as ergogenic dietary substances^[1].
 MCE has not independently confirmed the accuracy of these methods. They are for reference only.

REFERENCES

[1]. Luckose F, et al. Effects of amino acid derivatives on physical, mental, and physiological activities. Crit Rev Food Sci Nutr. 2015;55(13):1793-1144.

Caution: Product has not been fully validated for medical applications. For research use only.

Tel: 609-228-6898

Fax: 609-228-5909

E-mail: tech@MedChemExpress.com

Address: 1 Deer Park Dr, Suite Q, Monmouth Junction, NJ 08852, USA