

**PORCINE CIRCOVIRUS (PCV2) ANTIBODY  
RAPID TEST CARD  
MANUAL**

---

## Porcine Circovirus (PCV2) Antibody Rapid Test Card

---

**Catalogue Number. IP100126**

### ***Principle***

This test strip is based on colloidal gold immuno-chromatography technique to detect Porcine Circovirus (PCV2) antibody in porcine serum, plasma and whole blood qualitatively. When testing, PCV2 antibody in sample combine with antigen coated by colloid gold forming complexes, moving forward to the other head. When reaching the T-line, the specific antigen on the membrane capture the complexes and appear a T line, C line appears, means the test is valid.

### ***Technical Specifications***

Specifications: 40 tests/kit

### ***Components***

1	PCV2 antibody test card	40 pieces
2	Dropper	40 pieces
3	Manual	1 piece

### ***Sample preparation***

#### **1. Whole blood**

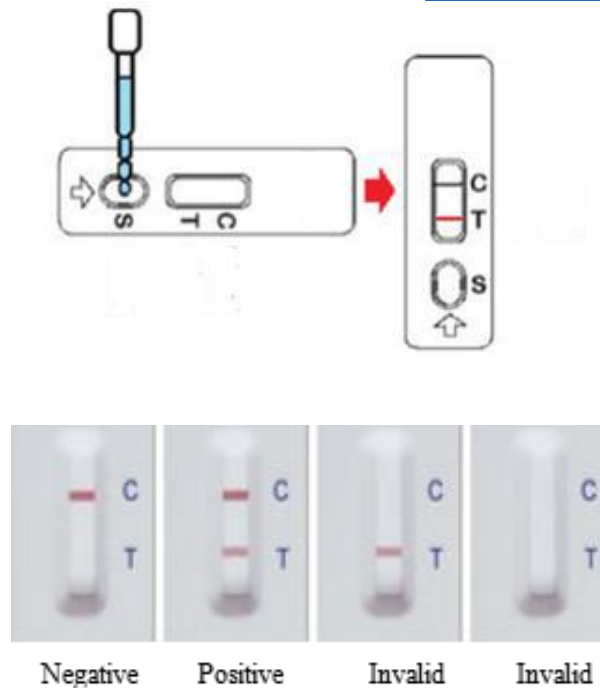
Collect anticoagulated whole blood, use for that very day;

#### **2. Serum**

Collect blood, put at 37°C for 1-2h, take the supernatant, centrifuge at 1500r/min for 10min, separate the serum. The serum can store for 2-3 days at 4°C, for long term storage, store at -20°C in frozen.

### ***Operation Procedures***

1. Read the manual carefully and return the test card and sample to room temperature before use.
2. Take out test card, use dropper to absorb the sample, drop 2-3 drops into well mark “S” ; or use Micropipette to transfer 70ul sample into well mark “S” .
3. Read the results in 15min at room temperature.



### Result

1. **Negative** (-) : no color reaction on Test Line (T Line), only on Control Line (C Line) being seen red color reaction. It means there is no PCV2 antibody in sample or the levels are lower than the detection threshold;
2. **Positive** (+) : Both on T Line and C line being seen red color reaction. It means there is PCV2 antibody in sample;
3. **Invalid**: No color reaction on C Line. It means the operation is wrong or the test card is invalid.

### Notice

1. The test card can be used only once at room temperature, do not reuse or use test card out of expiry date.
2. Return all reagents and sample into room temperature before use.
3. Be careful when preparing sample, wear glove and mask.
4. This product is only for in vitro rapid diagnostic veterinary use, can not be quantified, do only qualitative testing.
5. The product test results are for reference only, for confirmation, please refer to the relevant national standard methods.

**Storage:** Store at 4-30 °C in dark, sealed, dry place, no frozen.

**Expiry date:** The shelf life is 24 months.